



**Heritage Confirms Multiple High-Grade Gold Intercepts and New Gold Zones up to
42g/t Au at Melba**

VANCOUVER, BC, February 9, 2026 – Heritage Mining Ltd. (CSE: HML FRA: Y66) (“**Heritage**” or the “**Company**”) is pleased to announce confirmation of High-Grade Gold intercepts at the Melba Mine Project (“Melba”) with its ongoing diamond drill program. Additionally, the Company is pleased to announce the confirmation of New Gold Zones at Melba (Figure 1,2). Melba, located ~22km northeast from Kirkland Lake and 90km southeast of Timmins in Northeastern Ontario, Canada. The project is comprised of ~3,886Ha. Melba lies along the Ross Fault, which is a splay off of the Porcupine-Destor Fault Zone and is associated with development stage and historic producing gold mines: McEwen Mine (Grey Fox Mine, +1Moz Au) ~22km away, and the Ross Mine (+1Moz Au) ~16km away (Figure 3).

Melba Project - Diamond Drill Program (Partial) Highlights:

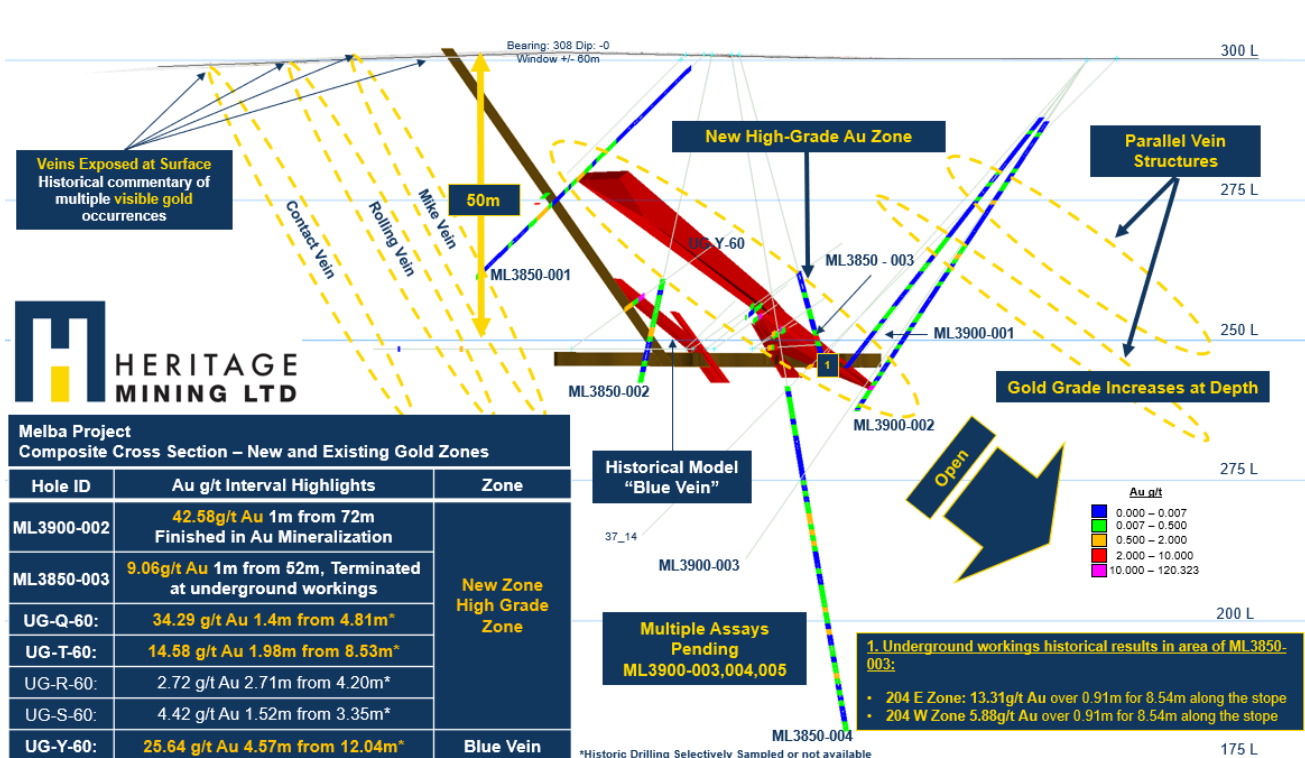
New Gold Zones (Figure 1,2) 2025/26 Diamond Drill Program:

- **ML3900-002: 42.57g/t Au over 1m from 72m, finished in gold mineralization.**
Aligned with historical results: UG-Q-60: **34.29 g/t Au 1.4m**, UG-T-60: **14.58 g/t Au 1.98m**
- **ML3850-003: 9g/t Au over 1m from 52m.** hole terminated, intersected underground workings.
Underground workings in area of ML3850-003:204 E Zone: **13.31g/t Au over 0.91m for 8.54m**

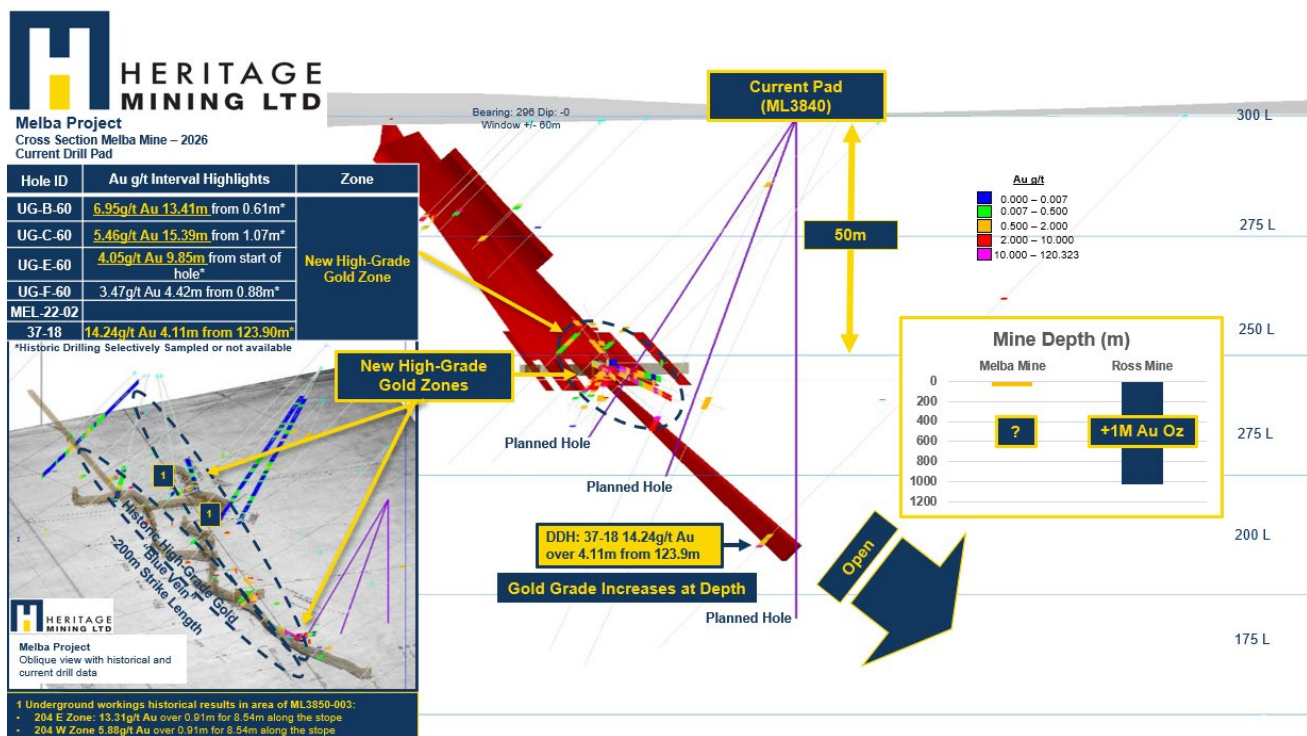
Significant Exploration Upside (Figure 1,2):

- **Multiple Assays Pending: ML3900-003, 004, 005**
- **Ongoing Diamond Drilling**
- **Multiple new and existing gold zones near surface**
- **Gold grades increasing at depth** (Historical DDH: 37-18: **14.24g/t Au over 4.11m from 123.9m**, Figure 2)

“The identification of multiple new gold zones at Melba this early in the program supports significant exploration potential. Furthermore, it confirms our initial interests, underground results have not been properly evaluated. We are very excited to further understand Melba and look forward to additional results in short order.” Commented Peter Schloo, President, CEO and Director of Heritage.



Melba Mine: Composite Cross Section – New and Existing Gold Zones



Melba Project: Current Pad with historic and current information

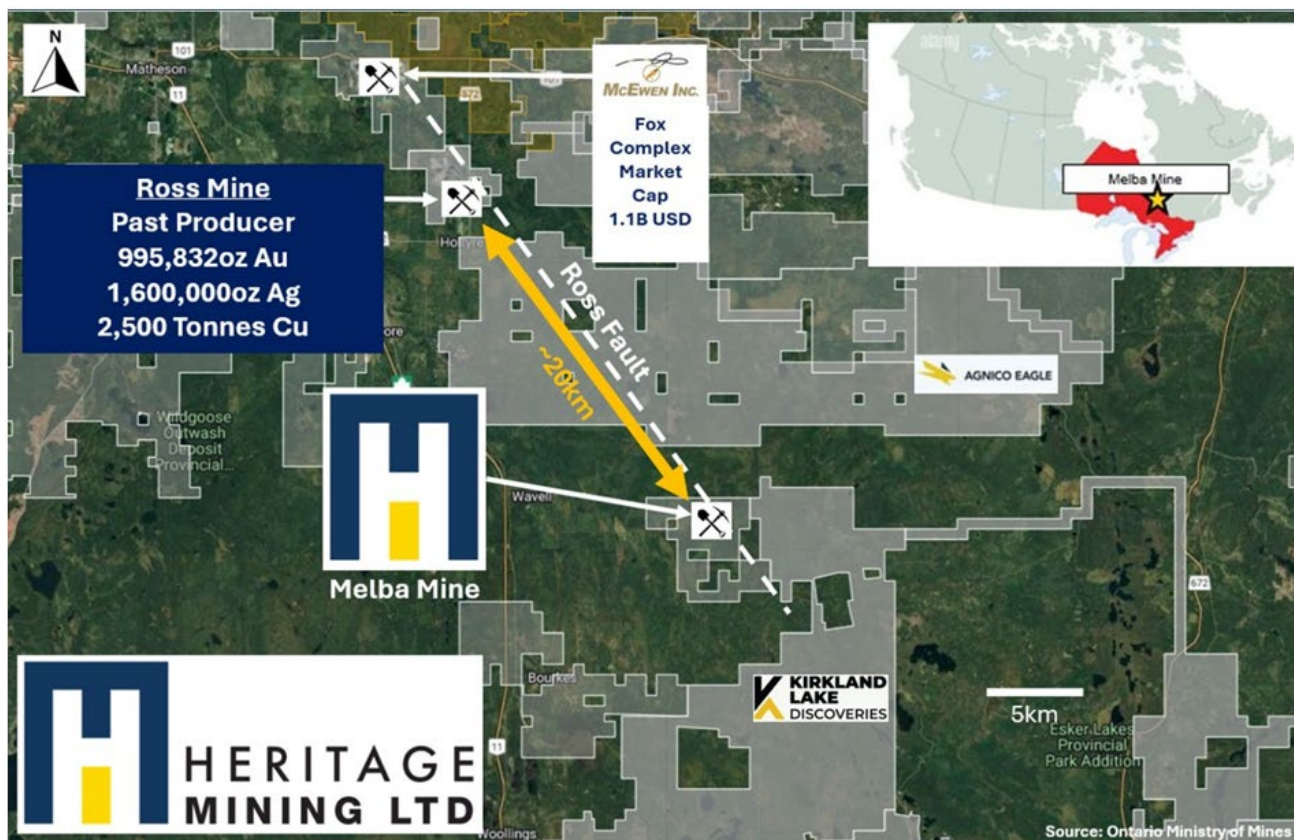


Figure 3: Regional Scale Map – Heritage Mining Melba Project and Ross Fault

| | | |
|--------------------------------------------------------------------------------------------------------------------------------------------|-----------|-------|
|  <div>HERITAGE MINING LTD CSE:HML FRA:Y66</div> | Q1 - 2026 | |
| Project Portfolio News Flow Forecast | | |
| Melba Project (3,886 Ha Historic High-Grade Gold Mine, Timmins/Kirkland Lake, Northeastern Ontario Canada): | February | March |
| • Additional Diamond Drilling Results | Y | Y |
| • Spring/Summer Exploration Program Planning | | Y |
| Drayton-Black Lake Project (19,3023 Ha, Mega Quartz Vein Mineralized with Gold, Sioux-Lookout Area, Northwestern Ontario Canada): | | |
| • Results from 30,000 Tonne Alcona Mine Rock Pile and 5,500 Tonne Split Lake Rock Pile Sampling | Y | Y |
| • Results from Soil Sampling Program over Mega-Quartz Veins Structure | Y | |
| • Spring/Summer Exploration Program Planning | | Y |
| Contact Bay (4,516 Ha, Historic High Grade Mine adjacent to Kinross, Dryden Area, Northwestern Ontario Canada): | | |
| • Spring/Summer Exploration Program Planning | | Y |
| Scattergood (6,397 Ha, New Gold Discovery similar to Dynasty Gold, Dryden Area, Northwestern Ontario Canada): | | |
| • Spring/Summer Exploration Program Planning | | Y |
| Note: Delays in news flow may occur to internal or external delays which is common in the junior exploration business | | |

Melba Mine Property Description

The Melba Mine is located in Northeastern, Ontario, Canada Southeast of Matheson Ontario (Figure 3) approximately seven kilometres west off the King's Highway 11, on the section of highway travelling from Kirkland Lake to Cochrane. The Melba Mine is located on the northeastern part of Ontario close to Ontario/Quebec border. The claim package includes single cell mining claims spanning ~3,886 hectares and one mining lease.

Technical Program

Heritage Mining adheres to a strict QA/QC protocol for handling, sampling, sample transportation and analyses. Chain-of-custody protocols are designed to ensure security of samples until their delivery at the laboratory.

Drill core was boxed, covered and sealed at the drill rig site. Core boxes were labelled with the official drillhole name and identified in numerical sequence starting from beginning of the hole to the end. Wooden blocks with the corresponding down hole meterage were inserted after every drill run. Drill core boxes were transported by drilling contractors to the onsite logging facility where Company personnel would take over the core handling.

Sampling, Sub-sampling, and Laboratory Analysis for Heritage Mining Melba Project. All drilling at the Melba project recovers NQ core. Drill core is systematically cut in half using a diamond saw. A qualified geologist examines the drill core, marking intervals for sampling and indicating the cutting line. Sample lengths are typically 1.0 metre, adjusted to a minimum length of 0.5 metre as necessary to respect lithological and/or mineralogical contacts and to isolate narrow veins or structures that may contain higher-grade mineralization.

Technicians saw the core along the cutting lines determined by the geologist. One half of the core is retained as a witness sample, while the other half is submitted for analysis. Individual sample bags are securely sealed and placed into sealed rice bags, which are then clearly marked with their contents. Heritage Mining submits samples for gold determination by PhotonAssay to Paragon Geochemical - Timmins. ("Paragon"). Paragon operates under a commercial contract with Heritage Mining. Drill core samples are shipped to Paragon for sample preparation at their facilities in Timmins, Ontario. Paragon is an ISO/IEC 17025:2017 accredited laboratory for the PhotonAssay method in addition to a variety of diverse metal determination methods. Analytical Procedures The Paragon procedure for PhotonAssay involves lab applying preparation codes INV-SAM (sample logging via barcode), PREP-PKG (weigh, dry at 100C, crushing to 70% passing 2mm, riffle split ~500g into a PA jar and 250g for pulverization to 85% passing 75 micron) followed by analytical code Au-PA01 which is a non-destructive gold analysis method using high-energy X-rays with a gold detection range from 0.015 ppm to 350ppm. After gold assays are returned, Heritage then may choose to perform multi-element assays on selected samples based on the gold results first with Paragon. In these cases, an aliquot is taken from the previously prepared 250g split for analysis by 48MA-MS (4 acid digestion followed by multi-element ICP-MS analysis for a 48 element suite).

Quality Assurance/Quality Control (QA/QC) The drill program design, QA/QC, and interpretation of results are performed by qualified persons employing a rigorous QA/QC program consistent with industry best practices. Standards and blanks account for a minimum of 10% of the samples, in addition to the laboratories' internal quality assurance programs. Quality Control data are meticulously evaluated upon receipt from the laboratories for any failures. Appropriate corrective action is taken if assay results for standards and blanks fall outside allowed tolerances. All results disclosed by Heritage Mining have successfully passed the Company's stringent quality control protocols. The Company does not recognize any factors of drilling, sampling, or recovery that could materially affect the accuracy or reliability of the assay data disclosed. The assay data disclosed in this press release have been verified by the Company's Qualified Person against the original assay certificates. Heritage Mining notes that it has not completed any economic evaluations of its Melba Project, and the project does not currently have any resources or reserves.

Qualified Person

Mitchell Lavery P. Geo, Strategic Advisor for the Company, serves as a qualified person as defined by National Instrument 43-101 – Standards of Disclosure for Mineral Projects and has reviewed the scientific and technical information in this news release, approving the disclosure herein.

ABOUT HERITAGE MINING LTD.

The Company is a Canadian mineral exploration company advancing its Ontario Project Portfolio in Northwestern and Northeastern Ontario. The Drayton-Black Lake, Contact Bay and Scattergood projects are located near Sioux Lookout in the underexplored Eagle-Wabigoon-Manitou Greenstone Belt. The Melba Property is located near Ramore, Ontario. All Projects benefit from a wealth of historic data, excellent site access and logistical support from the local community.

For further information, please contact:

Heritage Mining Ltd.

Peter Schloo, CPA, CA, CFA
President, CEO and Director
Phone: (905) 505-0918
Email: peter@heritagemining.ca

FORWARD-LOOKING STATEMENTS

This news release contains certain statements that constitute forward looking information within the meaning of applicable securities laws. These statements relate to future events of the Company. Any statements that express or involve discussions with respect to predictions, expectations, beliefs, plans, projections, objectives, assumptions or future events or performance (often, but not always, using words or phrases such as “seek”, “anticipate”, “plan”, “continue”, “estimate”, “expect”, “forecast”, “may”, “will”, “project”, “predict”, “potential”, “targeting”, “intend”, “could”, “might”, “should”, “believe”, “outlook” and similar expressions are not statements of historical fact and may be forward looking information. All statements, other than statements of historical fact, included herein are forward-looking statements.

Forward looking information involves known and unknown risks, uncertainties and other factors which may cause the actual results, performance, or achievements of the Company to be materially different from any future results, performance or achievements expressed or implied by the forward-looking information. Such risks include, among others, the inherent risk of the mining industry; adverse economic and market developments; the risk that the Company will not be successful in completing additional acquisitions; risks relating to the estimation of mineral resources; the possibility that the Company’s estimated burn rate may be higher than anticipated; risks of unexpected cost increases; risks of labour shortages; risks relating to exploration and development activities; risks relating to future prices of mineral resources; risks related to work site accidents, risks related to geological uncertainties and variations; risks related to government and community support of the Company’s projects; risks related to global pandemics and other risks related to the mining industry. The Company believes that the expectations reflected in such forward-looking information are reasonable, but no assurance can be given that these expectations will prove to be correct and such forward-looking information should not be unduly relied upon. These statements speak only as of the date of this news release. The Company does not intend, and does not assume any obligation, to update any forward-looking information except as required by law.

This document does not constitute an offer to sell, or a solicitation of an offer to buy, securities of the Company in Canada, the United States, or any other jurisdiction. Any such offer to sell or solicitation of an offer to buy the securities described herein will be made only pursuant to subscription documentation between the Company and prospective purchasers. Any such offering will be made in reliance upon exemptions from the prospectus and registration requirements under applicable securities laws, pursuant to a subscription agreement to be entered into by the Company and prospective investors.