

# Developing District Scale Discoveries in Ontario, Canada



## Investor Presentation

CSE:HML FRA:Y66 — Q4 '25

# Legal Disclaimer

## The Next District Scale Discovery in NW Ontario, Canada

### Forward Looking Information and Statements

This presentation contains “forward-looking information” for purposes of applicable Canadian securities laws. Forward-looking information includes statements that use forward-looking terminology such as “may”, “could”, “would”, “will”, “should”, “intend”, “target”, “plan”, “expect”, “budget”, “estimate”, “forecast”, “schedule”, “anticipate”, “believe”, “continue”, “potential”, “view” or the negative or grammatical variation thereof or other variations thereof or comparable terminology. Such forward looking information includes, without limitation, statements with respect to the Company’s expectations, strategies and plans for the Company’s: expected costs, budgets, timing and results of planned and future exploration; estimated completion dates for certain milestones and the Company’s plans; future financial or operating performance and condition of the Company and its business, operations and properties, including expectations regarding liquidity, capital structure, competitive position in its industry; and any other statement that may predict, forecast, indicate or imply future plans, intentions, levels of activity, results, performance or achievements.

Although the Company bases the forward-looking information contained in this presentation upon assumptions that it believes are reasonable, the Company cautions investors that actual results and developments (including its financial performance, financial condition and liquidity, and the development of the industry in which it operates) may differ materially from those made in or suggested by the forward-looking statements contained in this presentation. Despite a careful process to prepare and review the forward-looking statements, there can be no assurance that the underlying opinions, estimates and assumptions will prove to be correct. By their nature, forward-looking information and statements related thereto involve risks and uncertainties because they relate to events and depend upon circumstances that may or may not occur in the future. The Company believes that these risks and uncertainties include, but are not limited to, those described under “Risk Factors” in the final prospectus.

### Technical Disclosure

Technical and scientific information contained herein relating to the Drayton-Black Lake

Project is derived from the independent technical report entitled “NI 43-101 Technical Report on the Drayton - Black Lake Project, Drayton and Benedickson Townships, Kenora District, Northwestern Ontario, Canada” dated May 5, 2022, and effective as of April 29, 2022, prepared by James G. Clark, P. Geo., for the Company in accordance with NI 43-101.

### Disclaimer to United States Investors

The securities of the Company have not been registered under the United States Securities Act of 1933, as amended (the “U.S. Securities Act”), or any state securities laws and may not be offered or sold within the United States or to U.S. Persons unless registered under the U.S. Securities Act and applicable state securities laws or an exemption from such registration is available.

This presentation does not constitute an offer to sell or buy securities

This presentation does not constitute an offer to sell or the solicitation of an offer to buy, nor shall there be any sale of the securities of the Company in any jurisdiction in which such offer, solicitation or sale would be unlawful prior to registration or qualification under the securities laws of such jurisdiction.

### Qualified Persons

The technical information in this presentation has been approved by Mitchell Lavery, P. Geo, and Stephen Hughes, P. Geo advisors to the Company and Qualified Persons as defined by National Instrument “NI” 43-101 Standards of Disclosure for Mineral Projects.

# Investment Opportunity

Imminent Exploration Upside –  
Historical Confirmation Drilling

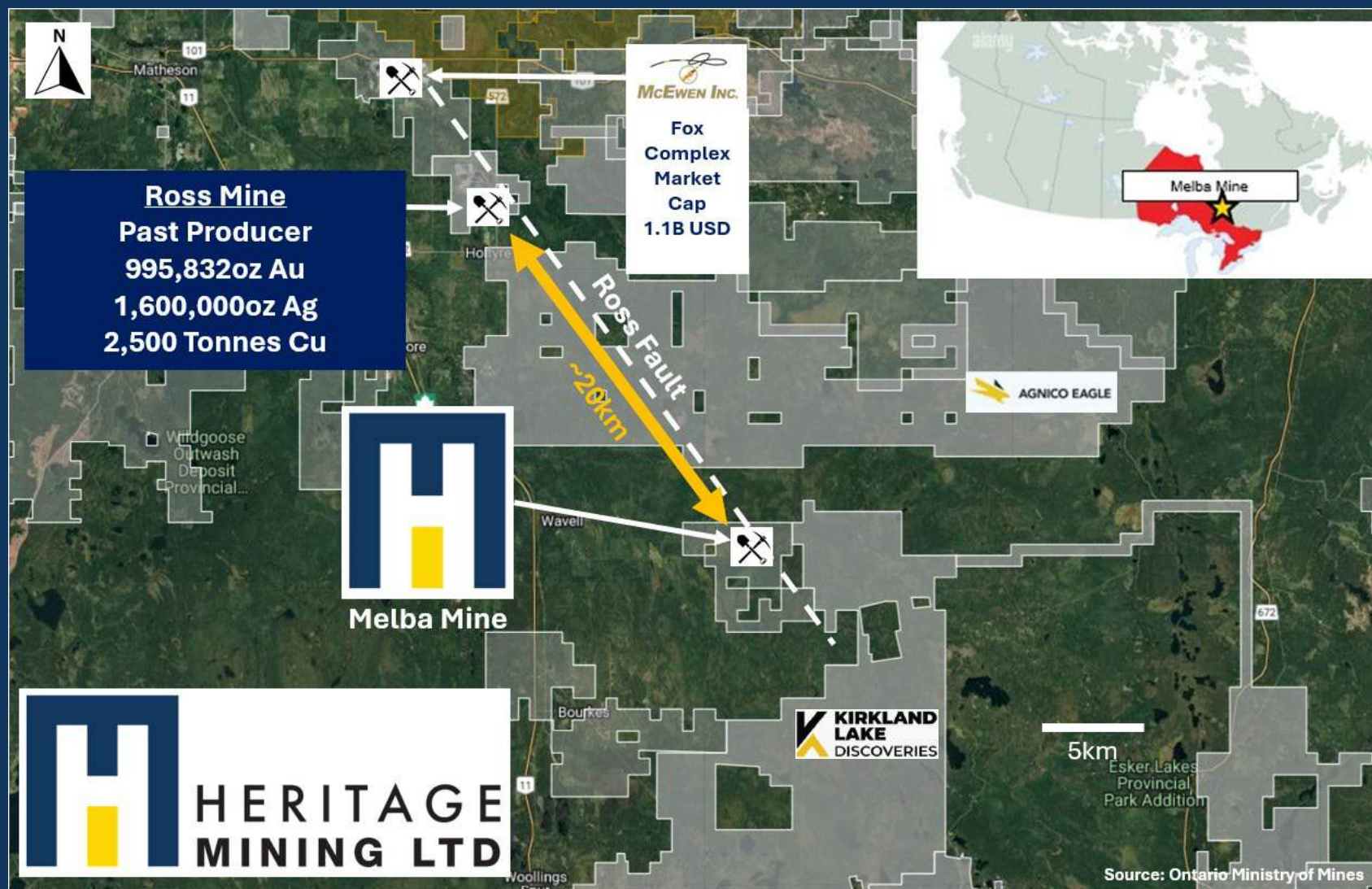
Planned 2025/26 Drilling (~1,780m, 26 holes) at Melba Mine on Trend (Ross Fault) with McEwan Inc and Historic Ross Mine:

- Melba Mine Project – XX Ha (Au, Ag, Cu) drilling to confirm 1930's and 1960's results (26 shallow holes)

Historical Highlights:

- Up to 23.27 g/t Au Over 4.5m and 6.59 g/t Au Over 12.87m near Surface
- Multiple occurrence of visible gold in multiple drill holes and surface workings
- Historic Ore Pile 2012 Bulk Sample results average grade of 3.99g/t, ore pile estimated to be 2000 short tonnes or 230.90 oz Au estimated (Nordex Explosives Ltd. Report June 25, 2012), Figure 1
- Rock Piles historically sampled up to 2.23g/t Au (Advanced Exploration Data, 2025)

\* See Appendix for Team Bios





# Investment Opportunity

Planned 2025/26 Drilling (~1,780m) at Melba Mine on Trend (Ross Fault) with McEwan Inc and Historic Ross Mine:

- Melba Mine Project – ~3,527 Ha (Au, Ag, Cu) drilling to confirm 1930's and 1960's results (26 shallow holes)

2025 Drilling Success on Northeaster Ontario projects ~4,500m

- Drayton Black Lake – 18,907 Ha (Au, Au-Ag, Au-Cu) – Confirmed Broad

Zone of Gold Mineralization within a Mega-Quartz Vein System – 2km Soil Program Pending

Contact Bay - 4,640 Ha (Au, Ni, Cu, PGE) – Au Confirmed under Historic Gold Mine

Scattergood 6,397Ha (Au, Cu, Ni, PGE) – Anomalous Gold Discovered in Close proximity to Dynasty Gold

- Multiple Mineralization Styles: Intrusion Related Gold Mineralization, Orogenic lode gold style mineralization, Cu, Ni, PGE (Multiple Greenfields Targets)

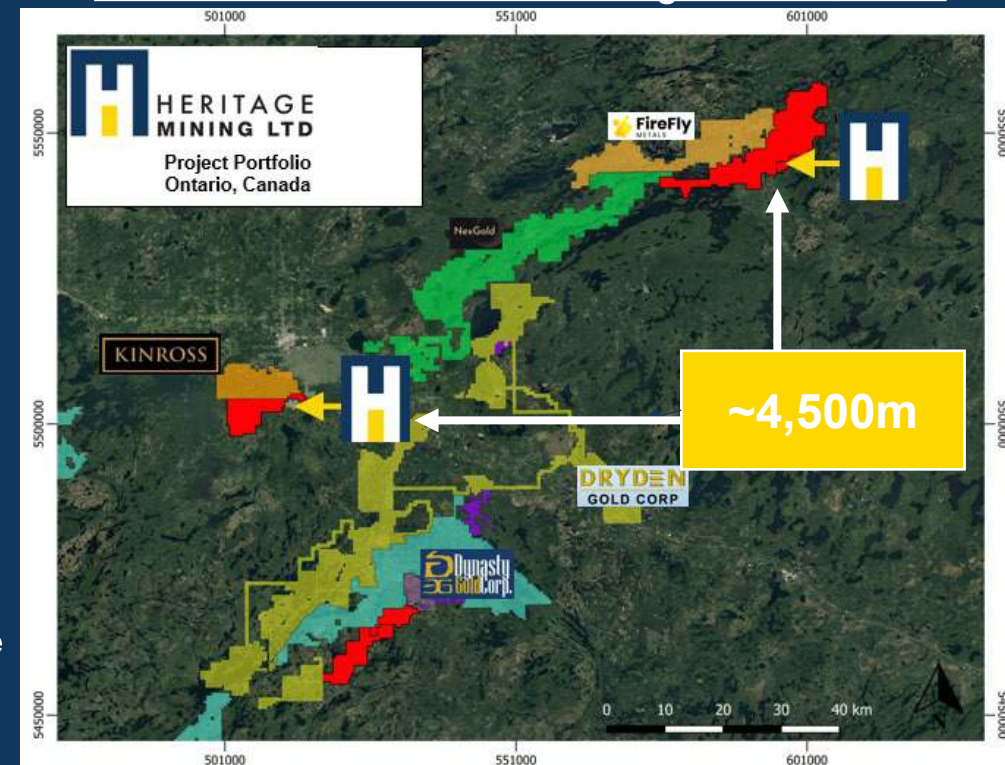
Teams Past Success – Exploration to Production\*:

- Côté, Sudbury, Ontario, Canada (6.58Moz Au): C\$585M Cash sale in 2012, Trelawney
- Bell Creek, Timmins, Ontario, Canada (599kOz Au) and Joubi ,Val d'Or, Quebec, Canada (62kOz Au) - Mitch Lavery, P. Geo – Advisor
- Grasberg District, Indonesia (Discovered or delineated 27 B lbs. Copper, 46MOz Gold)

\* See Appendix for Team Bios

The Next District Scale Discovery  
in NW Ontario, Canada

2025 Western Ontario Drill Programs ~4,500m



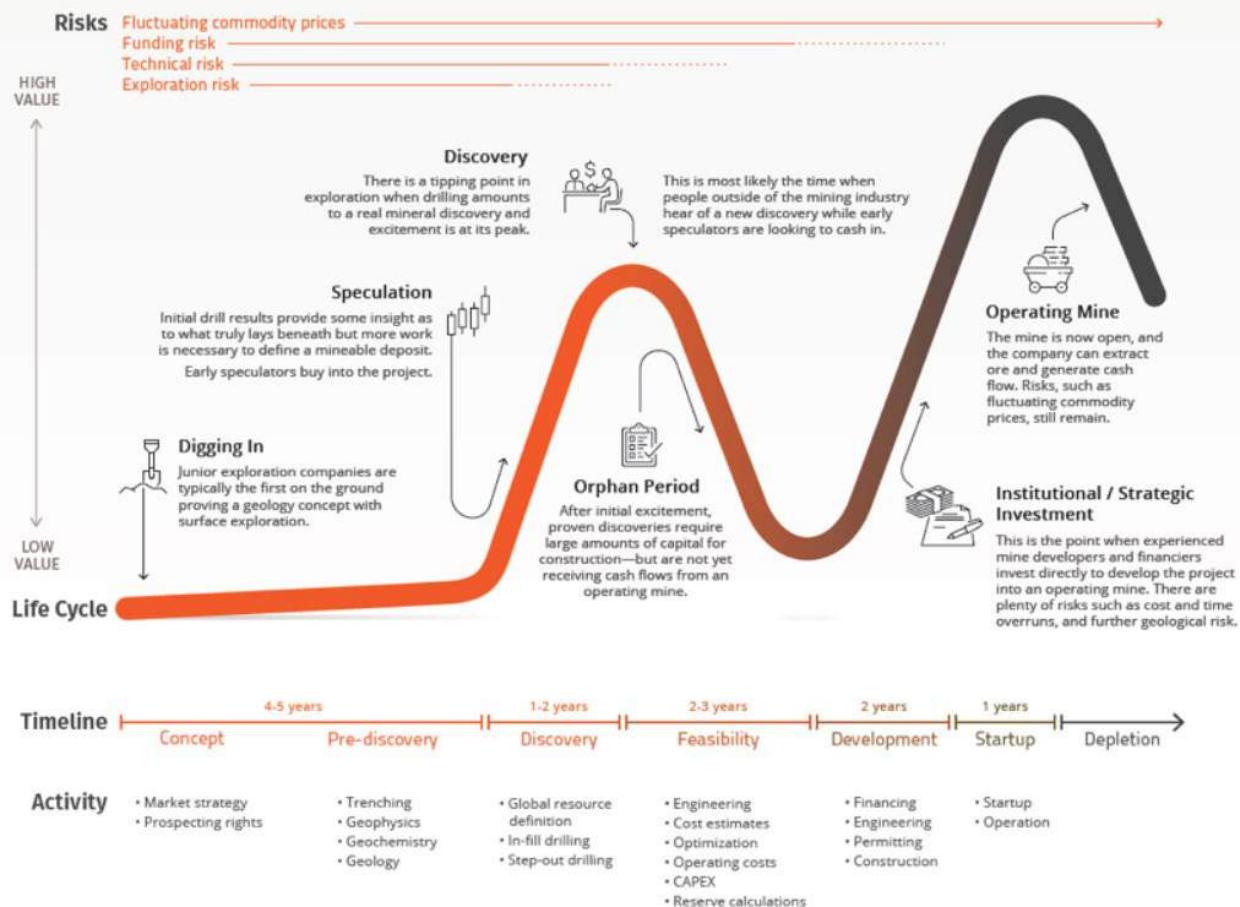
Capital Structure:

- C\$3.3M Market Cap, ~186M Basic Shares Outstanding, Liquid (~500k daily volume)

# Investment Opportunity

- Melba Mine Hosts Historical High Grade intercepts near surface intercept
- Past Producing Mine with existing rock piles, Bulk sample 2012 return 3.99g/t Au over 200 short tones (Press release October 15, 2025, Heritage Mining)

## The Lifecycle of a Mineral Discovery



## Melba Highlights for High-Grade Historical Confirmation

Area	Description	g/t Au	interval (m)	Notes
1	1960 - UG - Q - 60	12.56	2.74	Visible Gold noted in core
	1960 - UG - Y - 60	23.27	4.57	Visible Gold noted in core
	1960 - UG - T - 60	13.23	1.98	
	1960 - UG - S - 60	1.79	3.63	
	1937DDH 14	18.04	0.4	Visible Gold noted in core
	Drift Zones			
	1937 204 West Drift Zone 8.11g/t Au over 0.91m for 3.23m (Drift Length)			
	1937 204 West Drift Zone 5.88g/t Au over 0.91m for 8.54m (Drift Length)			
	1937 204 East Drift Zone 13.23g/t Au over .91m for 8.54m (Drift Length)			
	Historical Decline Shaft Values up to 22.21g/t Au			

## Melba Highlights for High-Grade Historical Confirmation

Description	g/t Au	interval (m)	Notes
1960 - UG - B - 60	6.85	12.35	Multiple Visible Gold Noted in core
1960 - UG - C - 60	3.76	6.25	Multiple Visible Gold Noted in core
1960 - UG - C - 60	5.77	9.15	Multiple Visible Gold Noted in core
1937 DDH 7	0.79	1.74	
1937 DDH 7	4.2	2.13	
Drift Zones			
206 E Zone: 11.29g/t Au over 1m for 51.52m			

## Melba Highlights for High-Grade Historical Confirmation

Description	g/t Au	interval (m)	Notes
1937 DDH4	1.24	0.44	
1937 DDH4	5.71	2.44	Visible Gold Noted in core
1937 DDH5	0.94	1	
1937 DDH8	6.84	1.68	
1937 DDH8	1.76	0.07	
1960 UG - J - 60	3.03	6.1	
1960 UG - 60	19.9	0.98	Visible Gold Noted in core
1960 UG - 60	25.33	1.07	Visible Gold Noted in core
1937 DDH 18	12.07	4.12	
1937 DDH 2:	8.18	1.98	
1937 - 206W Rib	11.81	0.81	
DDH15	1.62	1.62	









# HERITAGE MINING LTD

Melba Property  
Northeastern Ontario Canada  
Timmins/Kirkland Lake Gold Camp  
Drill Plan Map – Historical Confirmation (Area 1)

1937 204 West Drift Zone

1937 204 West Drift Zone

UG-X-60

1960 – UG – Q – 60: 12.56g/t Au over 2.74m  
1960 – UG – Y – 60: 23.27g/t Au over 4.57m  
1960 – UG – T – 60: 13.23g/t Au over 1.98m  
1960 – UG – S – 60: 2.38 g/t Au over 2.71m

Historical Decline Shaft

1937 204 East Drift Zone

UG-Y-60

UG-V-60

565175 E

HML Planned DDH

565200 E

565225 E

## Melba Highlights for High-Grade Historical Confirmation

Area	Description	g/t Au	Interval (m)	Notes
1	1960 – UG – Q – 60	12.56	2.74	Visible Gold noted in core
	1960 – UG – Y – 60	23.27	4.57	Visible Gold noted in core
	1960 – UG – T – 60	13.23	1.98	
	1960 – UG – S – 60	1.79	3.63	
	1937DDH 14	18.04	0.4	Visible Gold noted in core

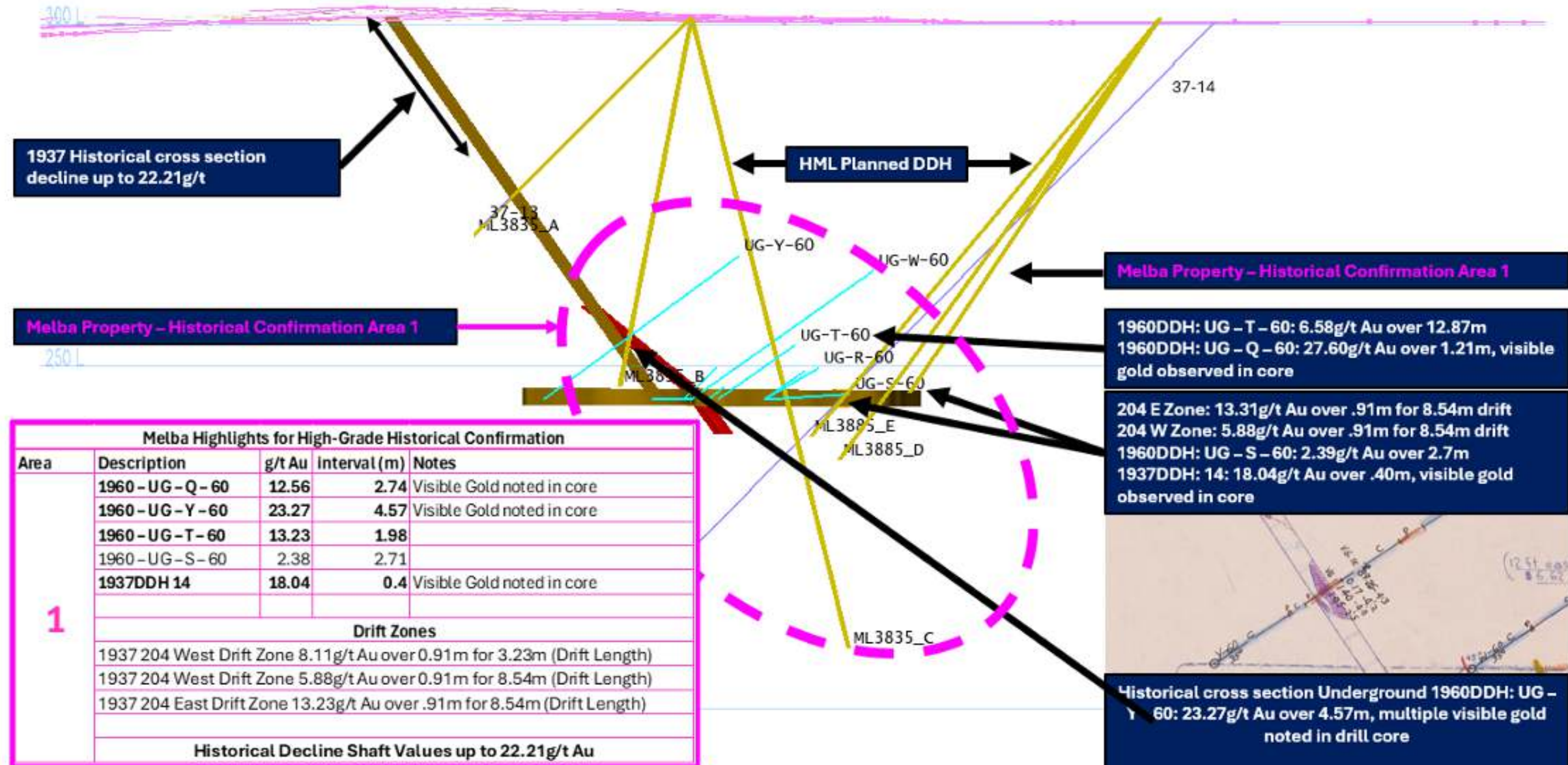
### Drift Zones

1937 204 West Drift Zone 8.11g/t Au over 0.91m for 3.23m (Drift Length)  
1937 204 West Drift Zone 5.88g/t Au over 0.91m for 8.54m (Drift Length)  
1937 204 East Drift Zone 13.23g/t Au over .91m for 8.54m (Drift Length)

Historical Decline Shaft Values up to 22.21g/t Au

Melba Property – Historical Confirmation Area 1



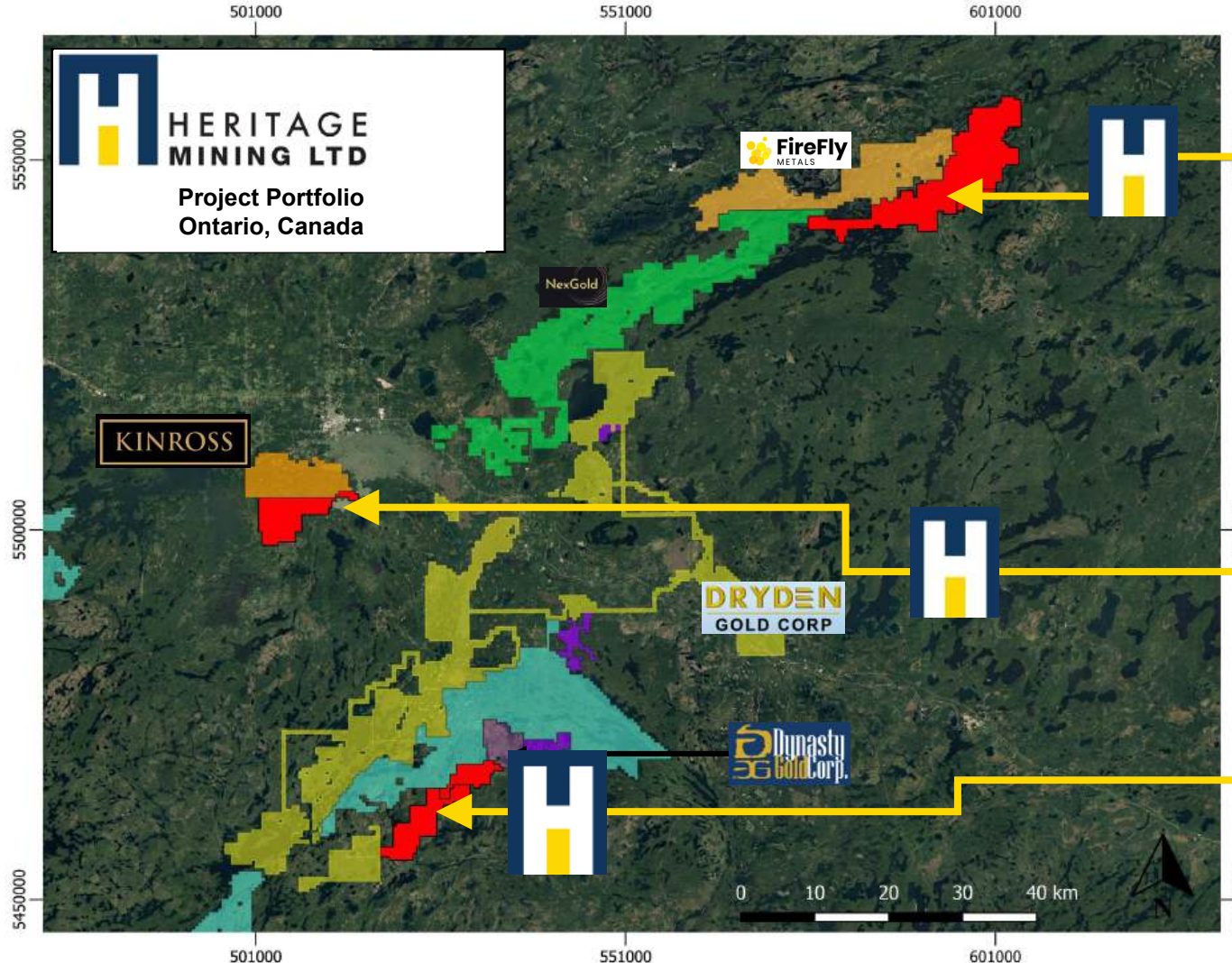




# Wester Ontario Portfolio

District Scale Discovery Potential  
in NW Ontario, Canada

Heritage Mining Ltd. is a public junior exploration company focused on developing Tier-1 precious and base metal assets in mining-friendly regions.  
The Company is listed on the Canadian Securities Exchange (CSE: HML) and the Boerse Frankfurt Exchange (FRA: Y66)



## Drayton – Black Lake Project – Active Drilling

2025 Diamond Drill Program Zone 3

### Extension Drill Highlights:

- Drilling discovered a broad zone of granite-hosted quartz vein mineralization
- Widest quartz vein ever intersected at the Project (+74m near surface)
- Locally visible sulphides include chalcopyrite, galena, pyrite and hematite staining
- ~1,300m program

## Contact Bay Project

2025 Diamond Drill Program

- ~2,700m allocated to Rognon Mine Area, small scale past producing mine in early 1900's

## Scattergood Project

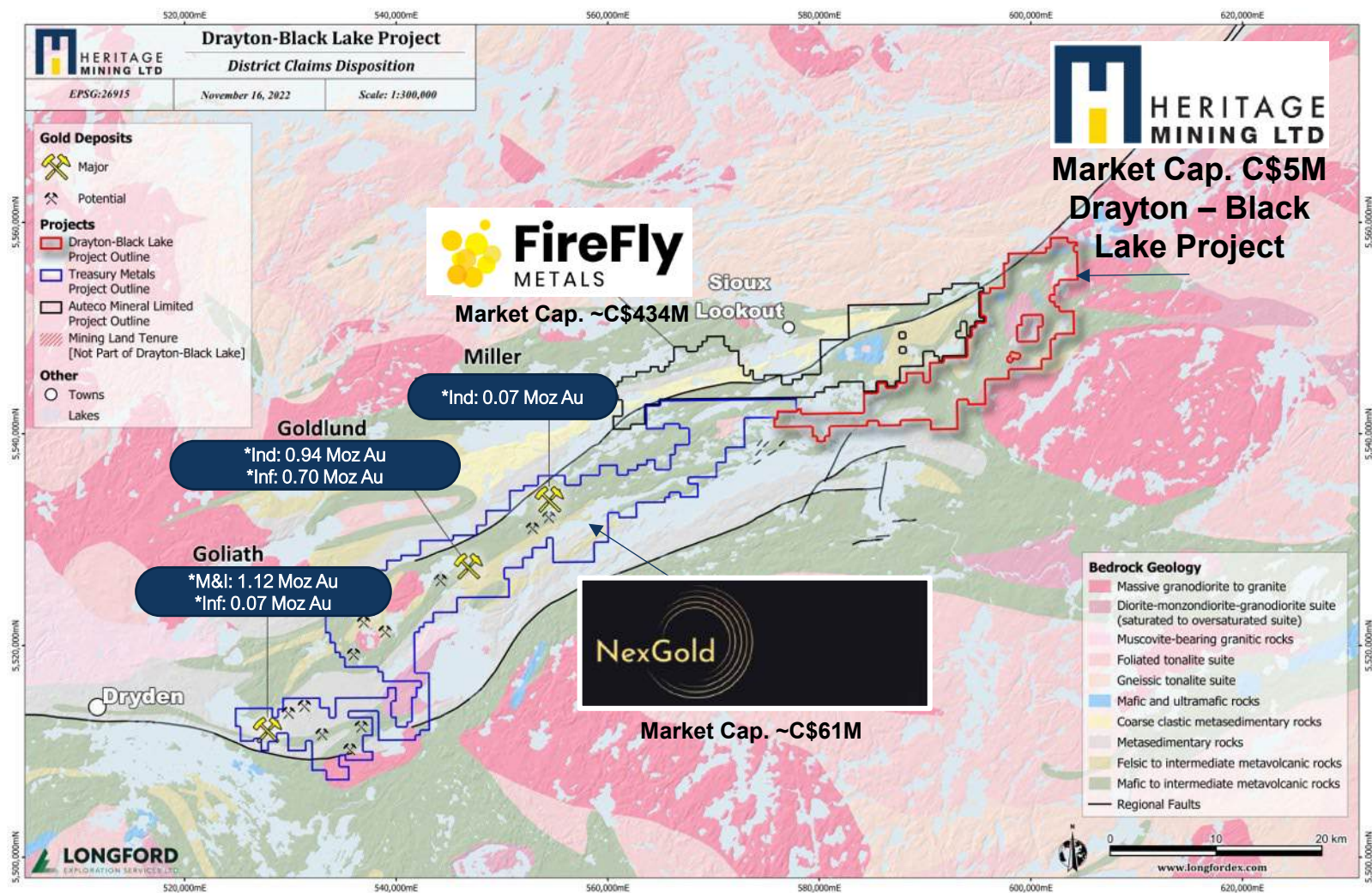
2025 Field Program

- Targeted prospecting program focusing on shear zones in the north east portion of the property



# Drayton-Black Lake Project Area

District Scale Discovery Potential in  
NW Ontario, Canada



**Multiple Deposit  
Potential**





# Ontario Project Portfolio

## Equipment – Lease to Own





# Board of Directors



**Peter Schloo, CPA, CA, CFA**  
CEO, President & Director

Director of Silver Crown Royalties Inc., Ramp Metals, and Pacific Empire Minerals Corp., Founder of Great White Capital Ltd. and Dealing Representative at Corton Capital. Previously Interim CFO and VP Corp Dev. for Ion Energy Ltd. 10yrs of progressive experience in capital markets, operations and assurance. C\$95M in associated capital raised. Mr. Schloo is also a licensed prospector and diamond driller in Ontario, Canada.



**Patrick Mohan**  
Chair & Director

Previously President, CEO, Director & Head of IR at Kittrnor Metals, Inc., Mr. Mohan's past successes also include development of the Cote gold Project and the sale of Trelawney Mining & Exploration to IAMGOLD Corp for C\$585 million (US\$595 million) in cash in 2012.



**Wray Carvelas**  
Director, Chair of Compensation Committee

Mr. Carvelas was previously President, CEO, Director of DRA Global, leading over 4,500 employees across five continents. Prior to that, as Project Director & Senior Project Manager, DRA Mineral Projects, he was responsible for project execution across a ~C\$5B portfolio of development and production operations. He has also held various positions at KBR, ELB, and De Beers.

## Management & Technical Team



**Patrick Sullivan**  
Corporate Secretary

Mr. Sullivan is a mining, M&A and securities lawyer at a national law firm with a decade of experience in the junior mineral exploration sector. He has acted on several significant global mining transactions such as South32 Limited's \$2.1 billion acquisition of Arizona Mining, Washington Companies' \$1.2 billion acquisition of Dominion Diamond Corp, and Hudbay Minerals' \$555 million acquisition of Augusta Resource Corporation.



**Thomas Reid, CPA, CA**  
Director, Chair of Audit Committee

Over 30 years of experience in the areas of Finance, Corporate Development, Public Relations and Investor Relations. He holds the CPA, CA designation and has served as the CFO Canada and Head of Corporate Development at Sun Life Financial.



**Rachel Chae**  
CFO

Ms. Chae has been CFO for various publicly traded companies, including a number of Canadian junior mineral exploration companies. She offers eight years of experience and holds the Chartered Professional Accountant designation.



# Strategic Geology Advisors



**Dr. Brett Davis**

Brett is widely regarded in the exploration and mining industry for his application of applied structural geology to numerous commodity types and mineral deposit styles. The approach Brett has brought to understanding mineralizing environments globally is a product of the integration of modern structural geology and techniques married with several decades of applied research.

Brett received a structural geology PhD (1992) from James Cook University following a role as a production geologist at Mt Isa Mines. This was succeeded by six years of applied structural geological postgraduate research before returning to the minerals industry in 1998. Here he held various technical and senior managerial roles at consultancy groups and in mining and exploration companies prior to running his own international geology consultancy, Olinda Gold Pty Ltd. Brett currently holds an Adjunct Senior Research Fellow position at James Cook University.



**Stephen Hughes, P. Geo**

A senior mining executive with over 30 years' experience in underground block cave and open pit mining operations. Involved in the successful exploration and project development of a number of large scale precious and base metal deposits, primarily in Asia, South America, and the Caribbean. A proven track record of discovery, development and building shareholder value, involved in the discovery and/or delineation of over 49 million ounces of gold, 35 billion pounds of copper.



**Mitchell Lavery, P. Geo**

Over 45 years experience in exploration and development of mining projects with a number of junior and major mining companies. Discovery of the North Zone at Bell Creek Gold Mine in Timmins, ON; the development and operation of the Joubi Gold Mine, Val-d'Or, QC; and the acquisition and development of the Quebec Lithium property, Lacorne, QC. President and Director of Seahawk Gold Corp. QP NI-43-101 and lifetime member of the PDAC



**Paul Warren, P. Geo**

Over 29 years of experience in exploration, geotechnical, structural geology and mine operations. Paul's past experience includes PT Freeport McMoran ("Freeport") at the Grasberg Mine, Indonesia where he held a range of operating and management Paul is an expert at computer based modeling and early-stage exploration. He holds a Master of Arts in Geology and a Bachelor of Science Geology from University of Texas at Austin. Paul is a Professional Geologist, Certified Professional Geologist and a Project Management Professional ("PMP").

# DBL – Zone 3 – Summary

The Next District-Scale Discovery in NW Ontario, Canada

Located about the contact between granitic intrusion (Lake of Bays Batholith) and mafic metavolcanic rocks (Sioux Lookout Greenstone Belt).

2025 Exploration Program confirmed a broad zone of gold mineralization within a Mega-Quartz Vein System. The ~74m wide quartz vein system (true width unknown) associated with a magnetic anomaly extends for ~4km along strike length and up to 200m in width.

2024 Diamond Drilling Program at Zone 3 has identified intrusion-related gold mineralization; a style of gold mineralization that has not been historically recognized within the Drayton-Black Lake Project Area.

Intrusion-related gold mineralization provides potential for large-tonnage gold deposits in the project area providing an additional focus for exploration efforts at Drayton-Black Lake, as historical exploration programs have targeted greenstone-hosted orogenic-style gold occurrences. The granite is a quartz-feldspar-biotite body overprinted by commonly well-developed tectonic foliation. This granitic batholith is at least 30 km across in plan-view, based on the Ontario Provincial geologic map.

Hole_ID	Target	From(m)	To(m)	Au g/t	Length(m)	Composite
HML25-013	Zone 3	101.11	106.00	0.98	5.00	5 m of 0.98 g/t Au
HML25-013	Zone 3	115.91	127.00	1.10	11.09	11.09 m of 1.10 g/t Au
Incl.	Zone 3	125.00	127.00	4.00	2.00	2.0 m of 4.00 g/t Au

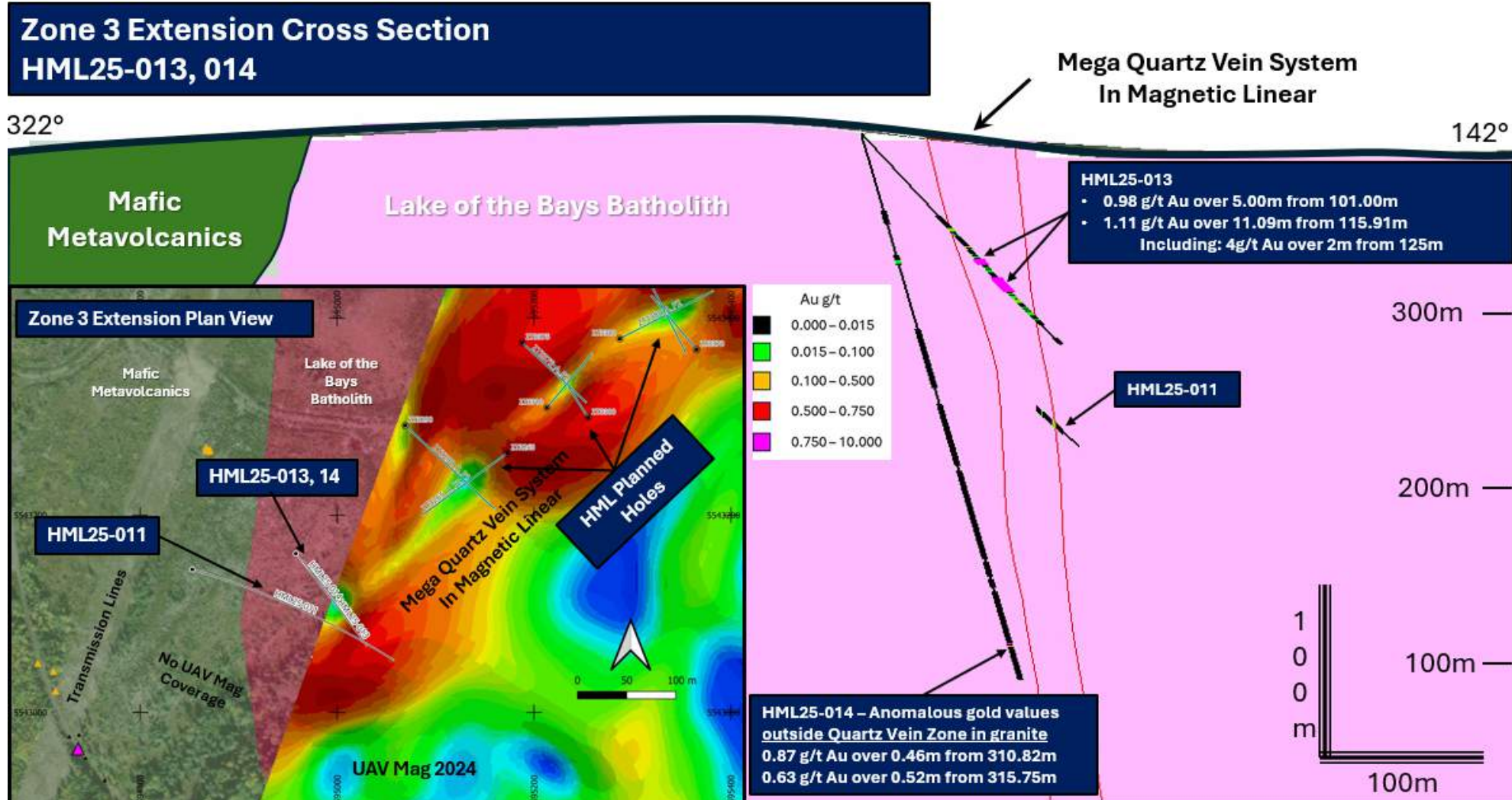


HML25-013 Box 29, 126.66m to 126.45m Mineralization Photo (4g/t Au over 2m from 125m interval)



# DBL – Zone 3

The Next District-Scale Discovery in NW Ontario, Canada



HML25-013, 014 Cross section with 2024 Drone Mag Survey



**Zone 3 Extension 2025 Fall Drill Program  
with 2024 Drone Mag Survey**

2025 Exploration Results

Confirm Anomalous Gold, structurally controlled over 1km in strike length

DDH25-016: 0.10g/t Au over 8m from 88m including (0.12g/t Au over 1m from 88m, 0.23g/t Au over 2m from 91m, 0.13g/t Au over 1m from 95m) and 1.03g/t Au over 1m from 102m

DDH25-017: 0.28g/t Au over 1m from 72m, 0.90g/t Au over 1m from 76m, 0.45g/t Au over 2m from 82m

DDH25-018 : Results Pending

Soil Program Asays Pending

**Historic High Grade Ore Shoot:  
70,000 Tonne at 8.16 g/t Au (1980)  
Not 43-101 Compliant**

**2024 Diamond  
Drilling**

**Results  
Pending**

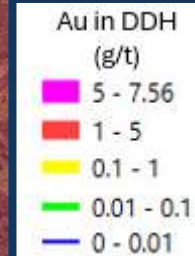
**HML25-13: 0.98g/t Au over 5m from 101m and  
1.11g/t Au over 11.09m from 115.91m**

**7.38g/t Au Rock  
Sample**

**Anomalous Gold Values with the Mega  
Quartz Vein Structure**

**Anomalous Gold Values with the Mega  
Quartz Vein Structure**

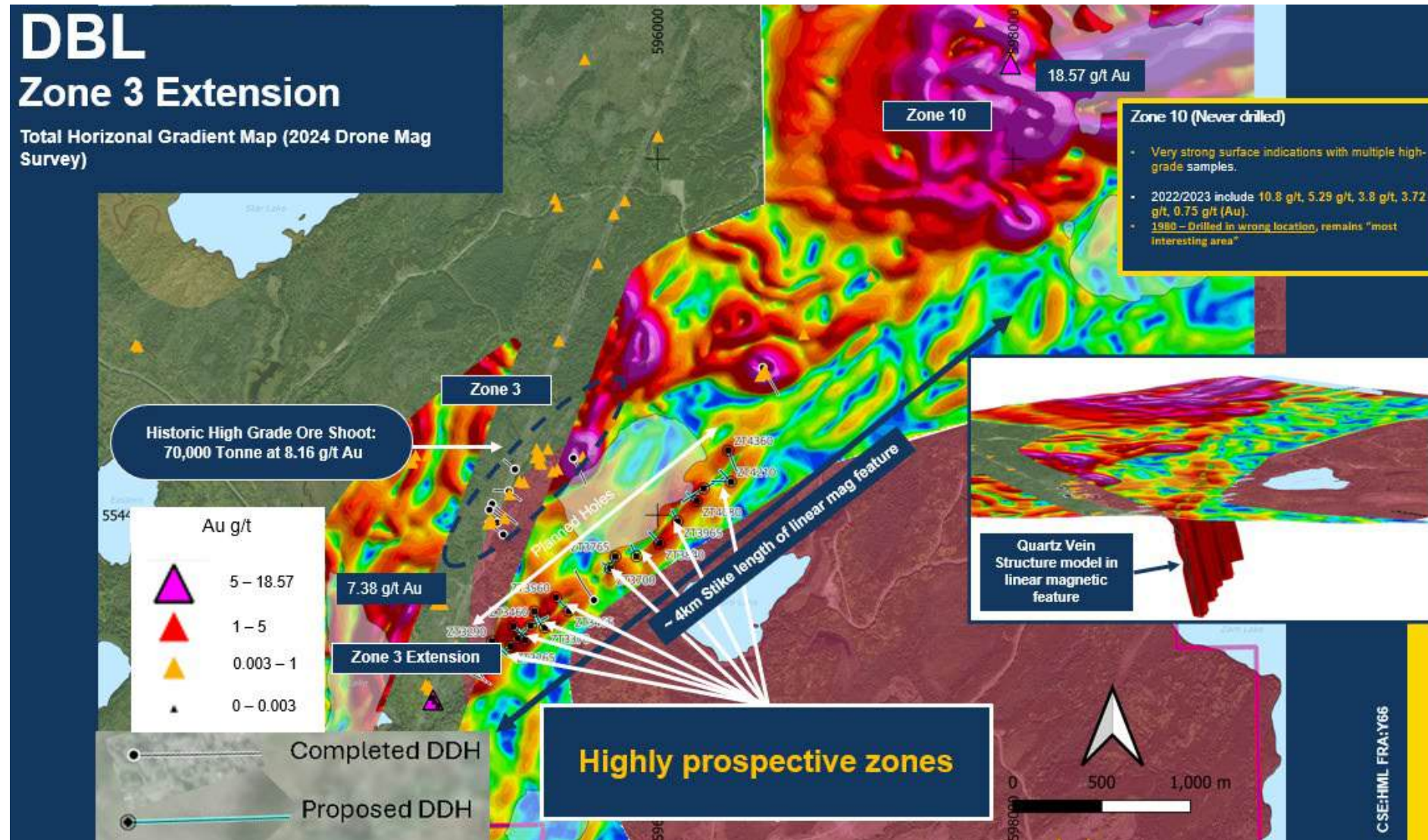
**~4km Long Mag Feature**





# DBL – Zone 3

The Next District-Scale Discovery in NW Ontario, Canada



Showing the completed and proposed holes testing the northeast-southwest trending magnetic lineament

# DBL – Zone 3

The Next District-Scale Discovery in NW Ontario, Canada

## Zone 3 - Geology

Decimeter- to meter-wide quartz K-feldspar pegmatitic dykes cut predominantly through the granite but are also present, albeit less prevalently, in the mafic metavolcanic host rock adjacent to the batholith. These pegmatitic dykes form a sheeted array across the batholith contact with the mafic host-rocks and are somewhat similar in appearance to the granite.

The markedly different rheological properties in the two rock masses have resulted in preferential fracturing and localization of the pegmatite dykes in the granite. Significantly fewer dykes have been emplaced into the adjacent mafic rocks due to the ductile character of the mafic host-rocks precluding formation of a fracture network required for dyke ingress.

When the pegmatite dykes do cut the mafic host-rocks, they tend to be ductilely folded and/or boudinaged, and are significantly thinner (centimeter- to decimeter-width) than in the granite.

**Fracturing of rheologically favourable pegmatite dykes, including along pegmatite-dyke contacts, has localised deposition of quartz-dominated vein suites in the fracture-permeability network. These quartz veins are associated with the sulphide and gold mineralization at Zone 3.**

The complex deformation-intrusion-mineralization history represented at Zone 3 has been compiled in Figure 6 and highlights where mineralization has been introduced into the rock mass. Figure 7 shows examples of some of these overprinting relationships.

## SUMMARY

Igneous intrusions

Ductile deformation

Brittle deformation

Sulphides including pyrite

Pyrite only

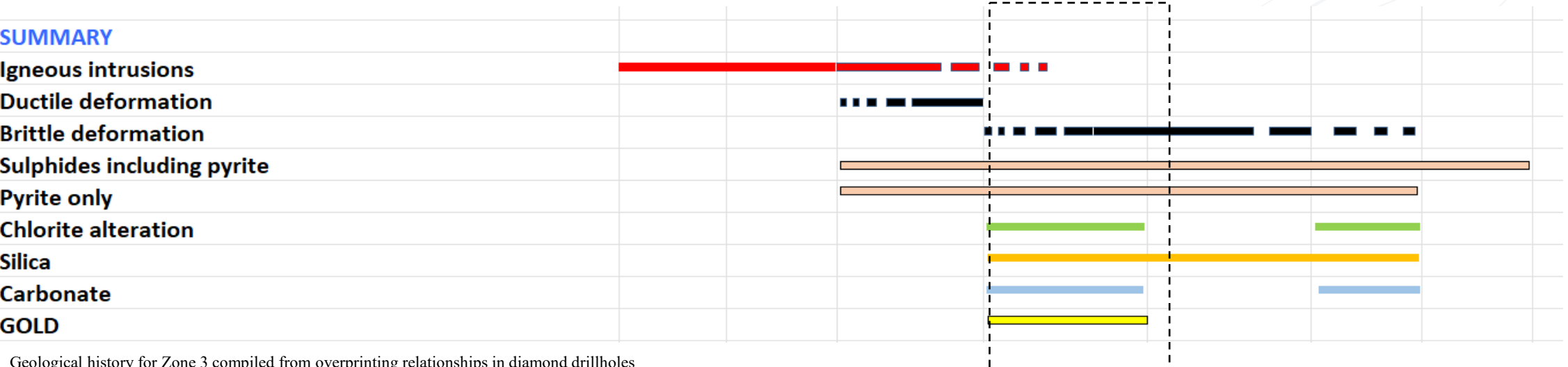
Chlorite alteration

Silica

Carbonate

GOLD

## Intrusion Related Mineralization Event



Geological history for Zone 3 compiled from overprinting relationships in diamond drillholes  
Appendix – Detailed Geological History



# DBL– Zone 3 Extension

2024 Prospecting Program – 2024

Easy Access – Road accessible – Via Logging Roads

2024 Zone 3 drill locations

Mineralized Granite  
(Pyrite, Sulfides)

Mineralization in mafic volcanics  
(Arsenopyrite)

Quartz Vein and sulfide mineralization associated with  
pegmatites cutting through the granite intrusion

Mineralization in granite (Pyrite, sulfides)

Mineralization in mafic metavolcanic  
(Molybdenite sulfides quartz vein)

1km

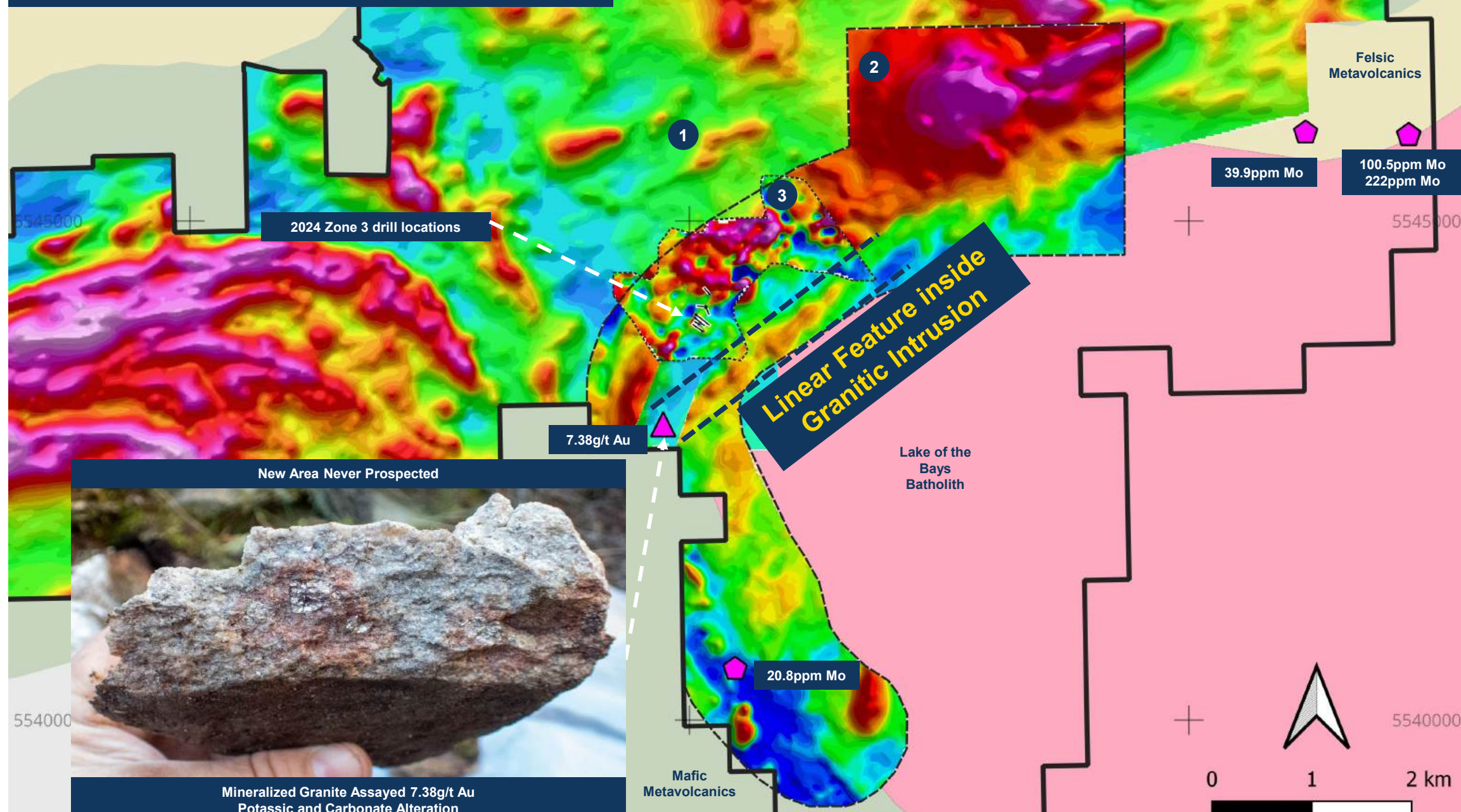


# DBL- Zone 3 Extension

2024 Prospecting Program and TMI (2024 and 2024 Data)

Easy Access – Road accessible – Via Logging Roads

1. 2022 Heli MAG
2. 2024 UAV MAG
3. 2024 Pilot 1980 Ground MAG



2024 Zone 3 drill locations

Linear Feature inside Granitic Intrusion

7.38g/t Au

New Area Never Prospected



Mineralized Granite Assayed 7.38g/t Au  
Potassic and Carbonate Alteration

20.8ppm Mo

Mafic Metavolcanics

Felsic Metavolcanics

39.9ppm Mo

100.5ppm Mo  
222ppm Mo

Lake of the Bays Batholith

0 1 2 km



# DBL– Zone 3 Extension

2024 Exploration and Prospecting Program



**Mineralized Granite Assayed 7.38g/t Au  
Potassic and Carbonate Alteration**



Quartz Vein and sulfide mineralization associated with pegmatites cutting through the granite intrusion





Target	Access	Potential Strike Length	Historical Highlights	Possible Relation To	Past Work	Recent Work
<b>Alkenore-Buffalo Zone 10 (Never drilled)</b> <b>2025 Summer Drill Program</b>	<b>Excellent</b>	<b>+2.5km</b>	<ul style="list-style-type: none"> <li>Very strong surface indications with multiple high-grade samples.</li> <li>2022/2023 include <b>10.8 g/t, 5.29 g/t, 3.8 g/t, 3.72 g/t, 0.75 g/t (Au)</b>.</li> </ul>	Alcona and/or Split Lake (supported by geophysics)	Trenching (1980's)	SGH Soils (2024) Grabs, Mapping, Property-wide Airborne Geophysics (2022/2023)
<b>Split Lake (Never Drilled post 1936/37)</b>	<b>Excellent</b>	<b>+3km</b>	<ul style="list-style-type: none"> <li>2 Compartment shaft (3 levels)</li> <li>Coarse gold n quartz veins 1936/37 <b>historic diamond drill holes assays 3m at 16.5g/t Au</b>.</li> </ul>	Alkenore Buffalo Zone 10 (supported by geophysics)	Trenching, Diamond Drilling Exploration/ Mine Shaft (1935-1937)	Grabs, Mapping, Property-wide Airborne Geophysics (2022/2023)
<b>Rosnel (Limited Drilling)</b>	<b>Excellent</b>	<b>+4.5km</b>	<ul style="list-style-type: none"> <li><b>2022/2023 grab samples up to 112 g/t Au.</b></li> <li>A parallel deformation zone to Moretti Deformation Zone and adjacent to the Botsford Iron Formation.</li> </ul>	Moretti (supported by geophysics)	Diamond Drilling (1970's)	Grabs, Property-wide Airborne Geophysics (2022/2023)
<b>K171 Shaft</b>	<b>Excellent</b>	<b>+2.5km</b>	<ul style="list-style-type: none"> <li><b>2022/2023 grab samples up to 25 g/t Au.</b></li> <li>Mine shaft (1998 discovery), <b>muck sample assays 318g/t Au</b>, multiple high grade gold values in historical trenching.</li> <li>Drilling in 2006 and 2008 had positive results, identifying multiple gold-mineralized horizons which are open in all directions.</li> </ul>	McCombe and Wright-Hargreaves (supported by geophysics)	Mine Shaft Discovered (1998), Geophysics (ground mag and EM) 1998-1999, Mapping 2004, Diamond Drilling 2006, Geophysical Modeling interp.(2017).	Grabs, Property-wide Airborne Geophysics (2022/2023)
<b>Wright-Hargreaves</b>	<b>Fair</b>	<b>+2.5km</b>	<ul style="list-style-type: none"> <li><b>2022/2023 multiple grab samples over 1g/t Au (1.40g/t Au, 1.65g/t Au, 1.27g/t Au, 1.27g/t Au, 1g/t Au)</b>. Multiple vein sets with significant strike length extension potential. Historic diamond drilling intersecting gold mineralization up to 0.6g/t Au over 6.5m</li> </ul>	McCombe and Shaft (supported by geophysics)	Geophysics (Airborne & Ground), grabs, mapping, trenching, diamond drilling (1948-2013)	Grabs, Mapping, Property-wide Airborne Geophysics (2022/2023)

## Drayton-Black Lake Project

*Reduced-to-Pole Magnetic Intensity  
over Bedrock Geology*

New Millenium Past Company work supports multiple mineralized deformation corridors

- Highest Grab sample in Property History, 2,330 g/t Au

## 2025 Scout Drilling Program

**Historic High Grade Ore Shoot:**  
70,000 Tonne at 8.16 g/t Au

Legacy Claim Boundary

HML Claim Boundary

Contact

1930's Mine  
Shafts

Alcona

Split Lake

Zone 10

HML New Claims

**Zone 3 (Never Drilled post 1937)**

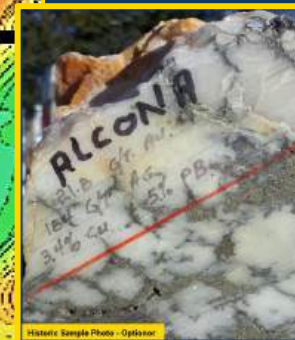
**Multiple Mineralized Zones:**

- D.D.H.4: 9.14m mineralized at 2.74m. 4.27m of 7.65g/t Au, 8.53m section at 27.43m of 2.83g/t Au to 24.38g/t Au, 4.27m section above valued at 7.09g/t Au (True Width 8.3ft, 2.53m) (1936)
- D.D.H. 12: 34.14m from 27.74m, 7.32m from 99.06m, 7.32m from 21.31m, 2.13m from 131m (1937)
- D.D.H 14: 9.14m "Zone" from 132.28m Commercial Ore (Historical Report Comments) (1937)
- D.D.H 13: Values for same zone not as high as in

**Estimated ore shoot of approximately 70,000 tonnes  
8.16g/t Au/ton (1980)**

### Alcona Area

- Past Company work confirms High Grade Au-Ag Vein System
- 200m wide, ~1km long and ~145m vertical depth deformation corridor (2023 drill program)



**Split Lake (Never Drilled post 1937)**

- 2 Compartment shaft (3 levels)
- Coarse gold n quartz veins 1936/37 **historic diamond drill holes assays 3m at 16.5g/t Au.**

**Zone 10 (Never drilled)**

- Very strong surface indications with multiple high-grade samples.
- 2022/2023 include **10.8 g/t, 5.29 g/t, 3.8 g/t, 3.72 g/t, 0.75 g/t (Au).**
- **1980 – Drilled in wrong location, remains "most interesting area"**

### 2024 Exploration Plan

#### Diamond Drilling

- Zone 3 – ~600m (5 shallow holes)
- Zone 10 – ~300m (3 shallow holes)
- Split Lake – ~200m (2 shallow holes)

#### Soils (SGH) and Mapping

Property wide along priority zone with complementing: mineralized contact zone, geophysical and structural areas of interest

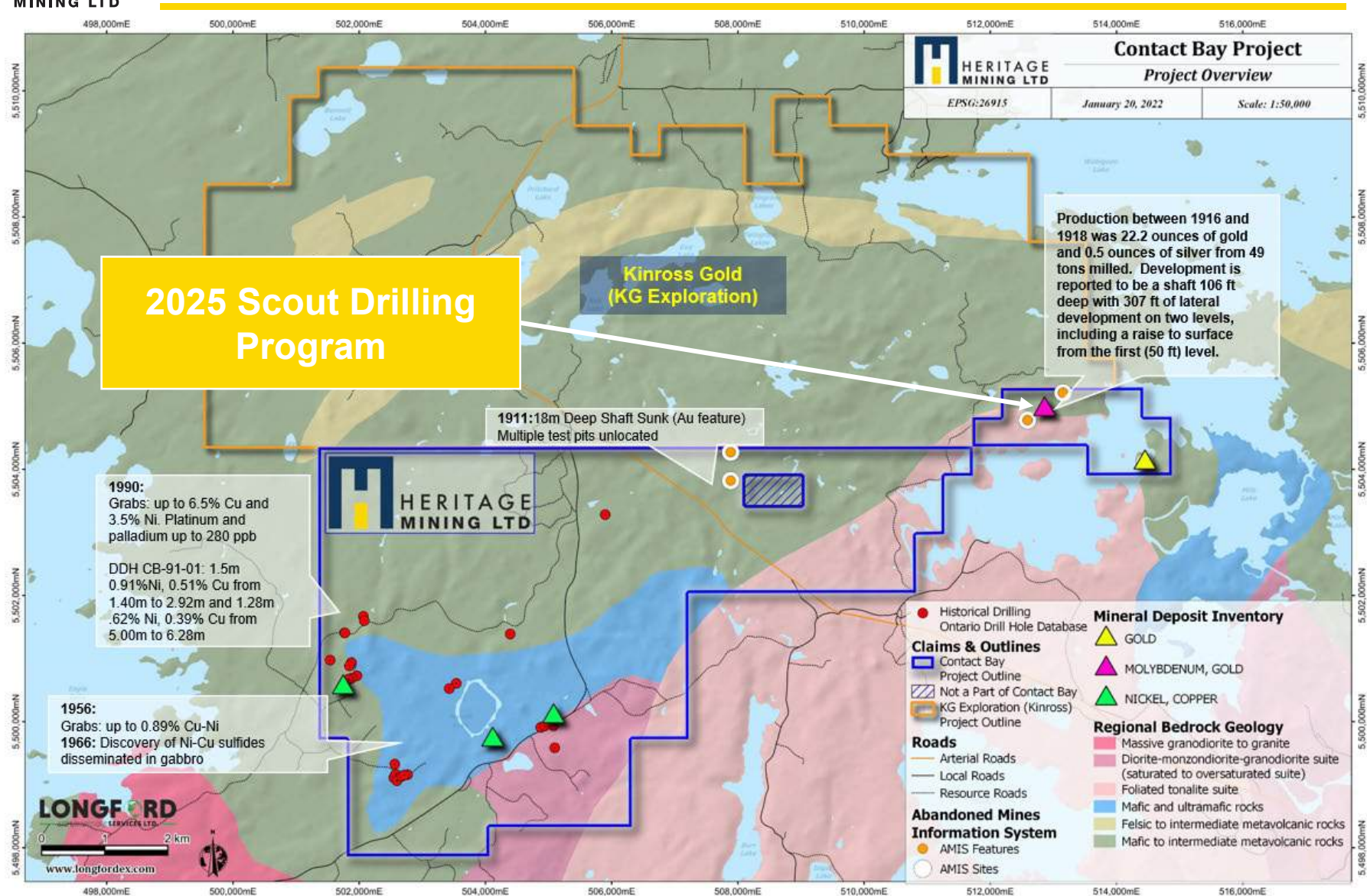
ke of Bays Batholith





# Contact Bay - Area

High-Grade Gold and Copper-Nickel-Platinum-Palladium Prospects



## Contact Bay Project – Rognan Mine

3D Magnetic Susceptibility Inversion Model  
Cross Section November 2024  
(Oblique View)

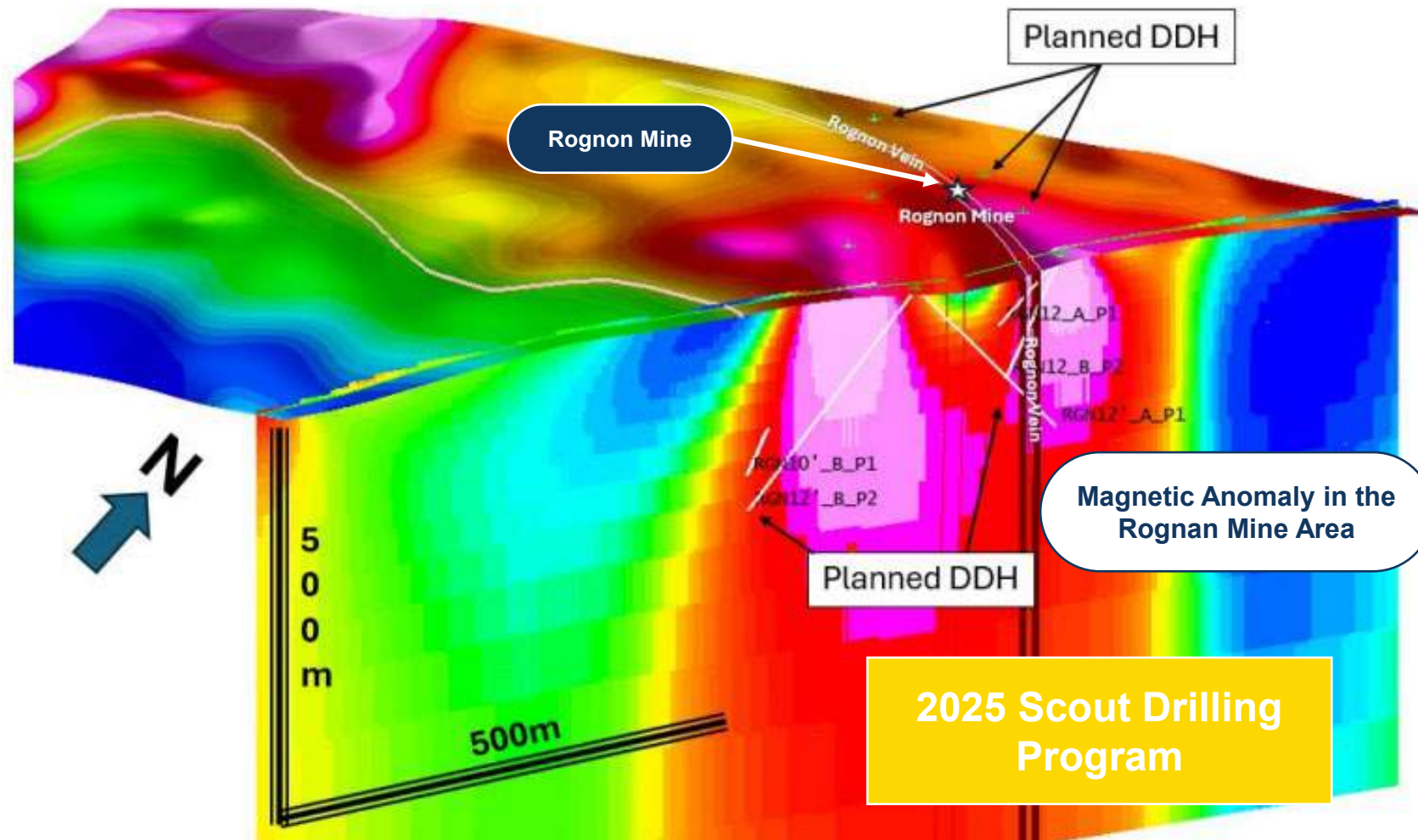
### 2024 Exploration Plan

#### Contact Bay - Rognan

- Prospecting – Completed (2023)
- UAV Mag – Completed (November 2024)
- IP – Permit Pending (Imminent)
- Diamond Drilling – Permit Pending (Imminent)

### Contact Bay – Rognan Mine – Highlights

- Au - Past Development (~22.2 oz Au 1900's production)
- Geophysical Anomaly showing similar characteristics geophysical to Zone 3 regarding intrusion along a contact
- Potential Strike Length 2.5km



Planned Diamond Drill holes over UAV Mag inversion model (2024)



**Contact Bay Project – Rognan Mine**

*Diamond Drill holes over UAV Mag inversion model (2024)*

2025 Exploration Plan

**Contact Bay – Rognan 2025 Diamond Drill Program**

1) Confirm Anomalous gold values under Rognon Mine

DDH RGN25-003: 1.47g/t Au over 2m from 84m

2) Intermediate intrusion cutting through the mafic volcanics associated with gold mineralization

**DDH RGN25-004:**

- 2.25 g/t Au over 2m from 101m including 4.31g/t over 1m
- 3.67g/t Au over 1.28m from 109m including 7.56g/t Au over 0.55m (**visible gold observed in core**)
- 0.94g/t Au over 1.05m from 258.64m including 1.76g/t Au over 0.55m
- 0.69g/t Au over 5m from 104m

DDH RGN25-007: 1.09g/t Au over 3m from 104m

**Magnetic Anomaly in the Rognan Mine Area**

**Rognon Mine Shafts**

**2025 Scout Drilling Program  
Confirm multiple anomalous  
gold results**

**Visible Gold in Core**

**Contact Bay – Rognan Mine – Highlights**

- Au - Past Development (**~22.2 oz Au 1900's production**)
- Geophysical Anomaly showing similar characteristics geophysical to Zone 3 regarding intrusion along a contact
- Potential Strike Length 2.5km
- 2025 Diamond Drill Program confirms gold under historic mineshaft and in proximity

RGN25-001

RGN25-003/002

RGN25-007

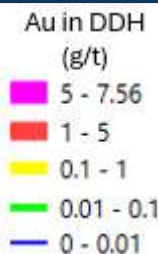
RGN25-006/004

RGN25-009/010

RGN25-008

N

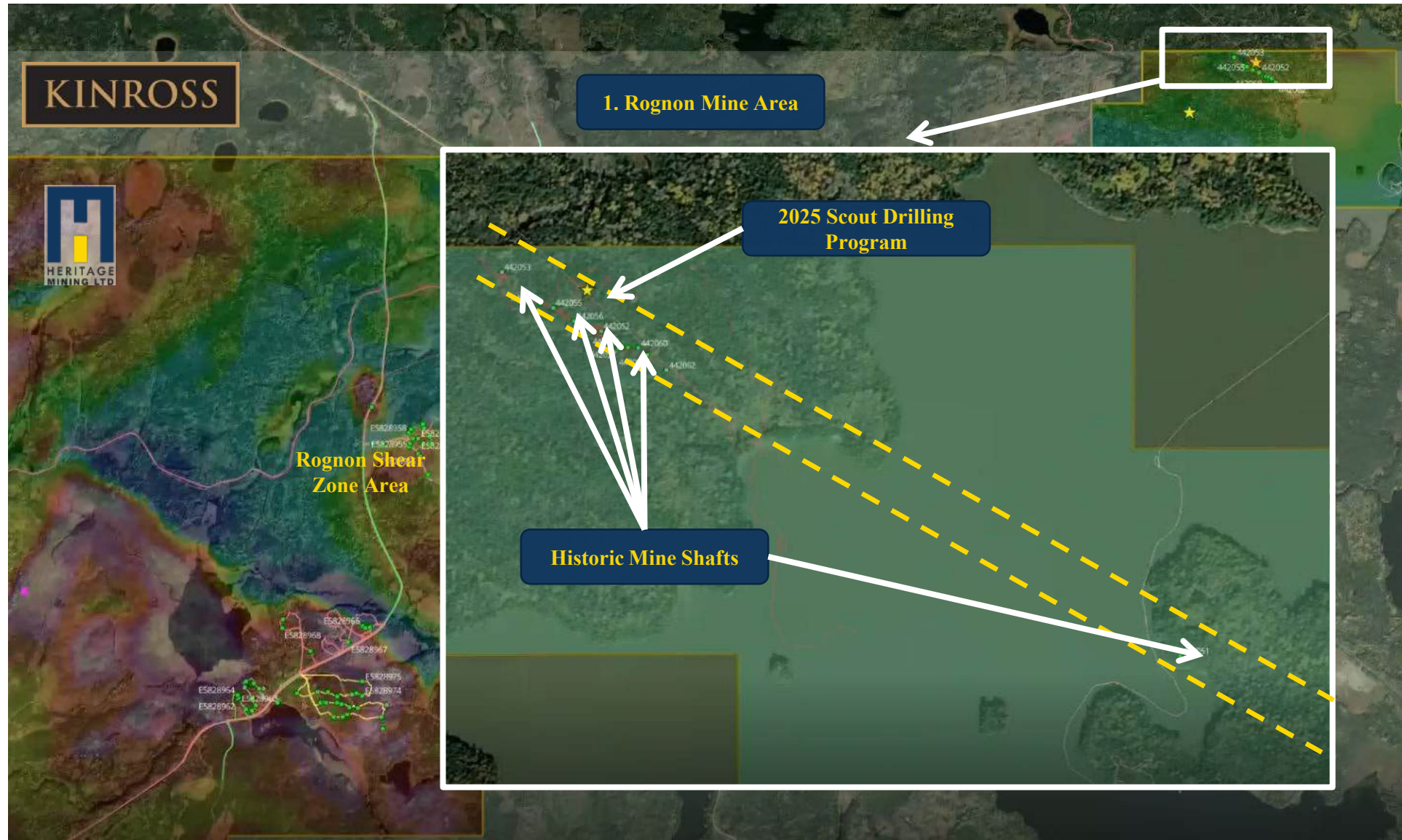
500m





# Contact Bay – Rognon Mine Area (1)

High-Grade Gold and Copper-Nickel-Platinum-Palladium Prospects

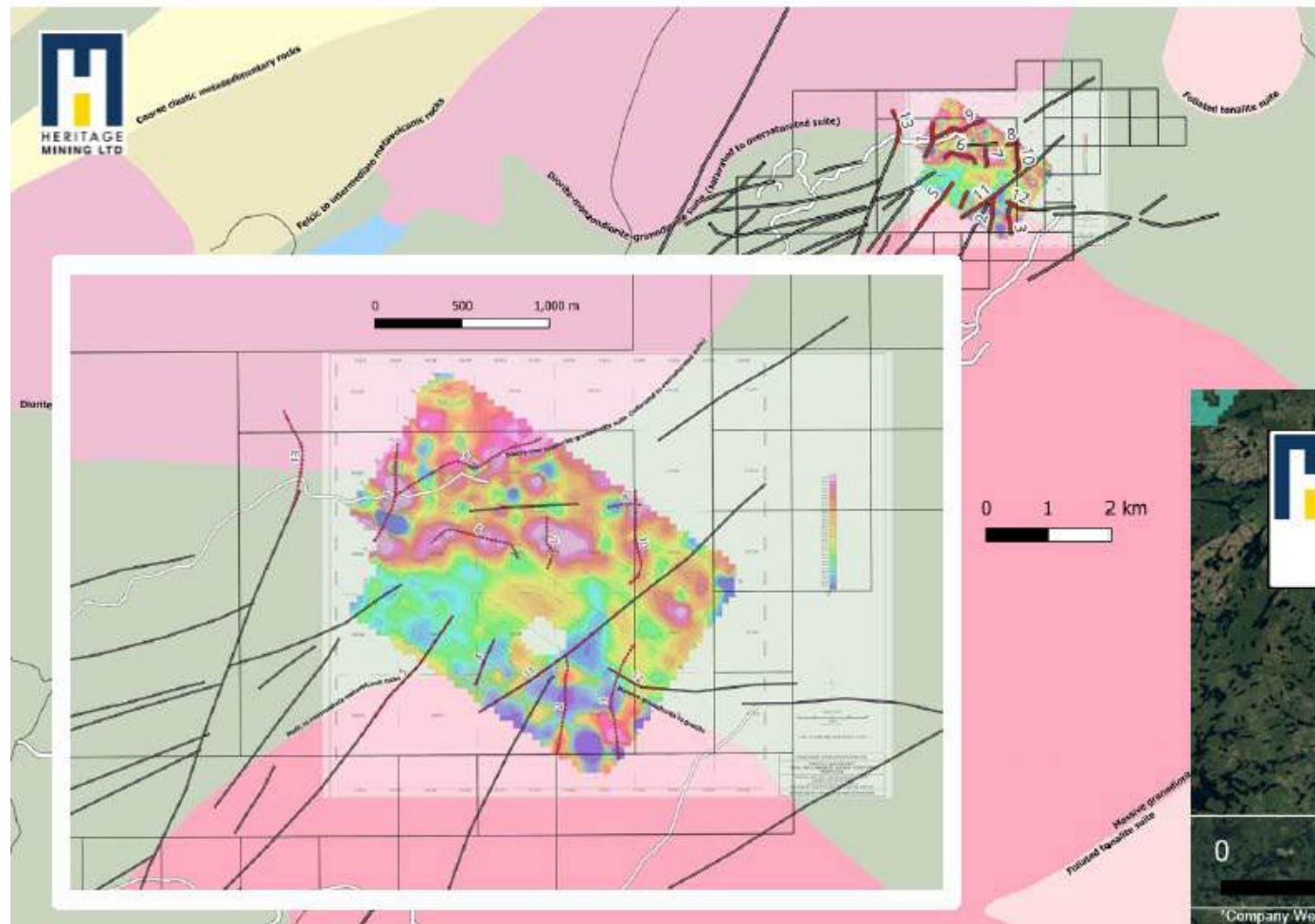




# Ontario Project Portfolio

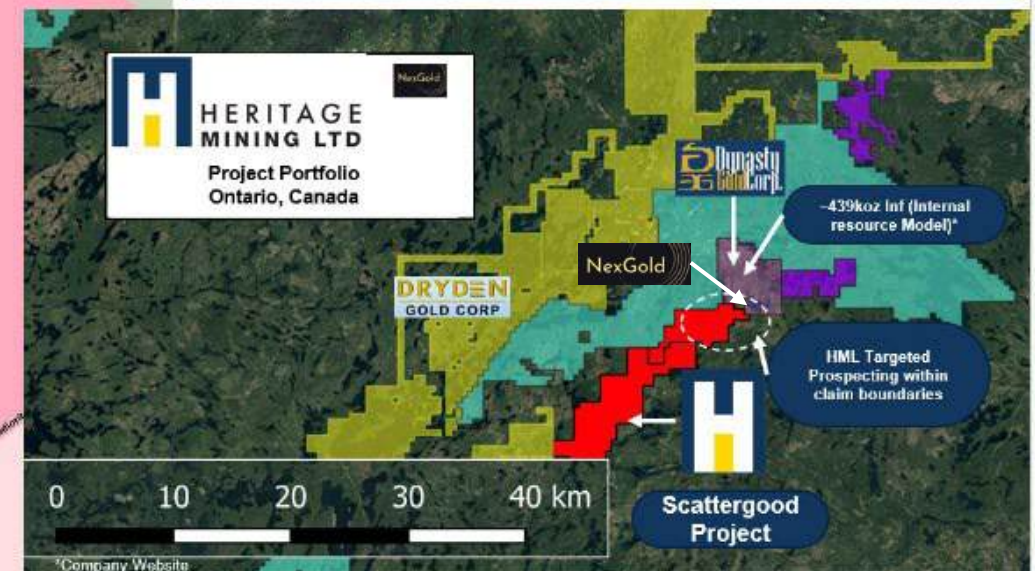
## Scattergood Project

# District Scale Discovery Potential in NW Ontario, Canada



## Active 2025 Targeted Prospecting

## June 5-15

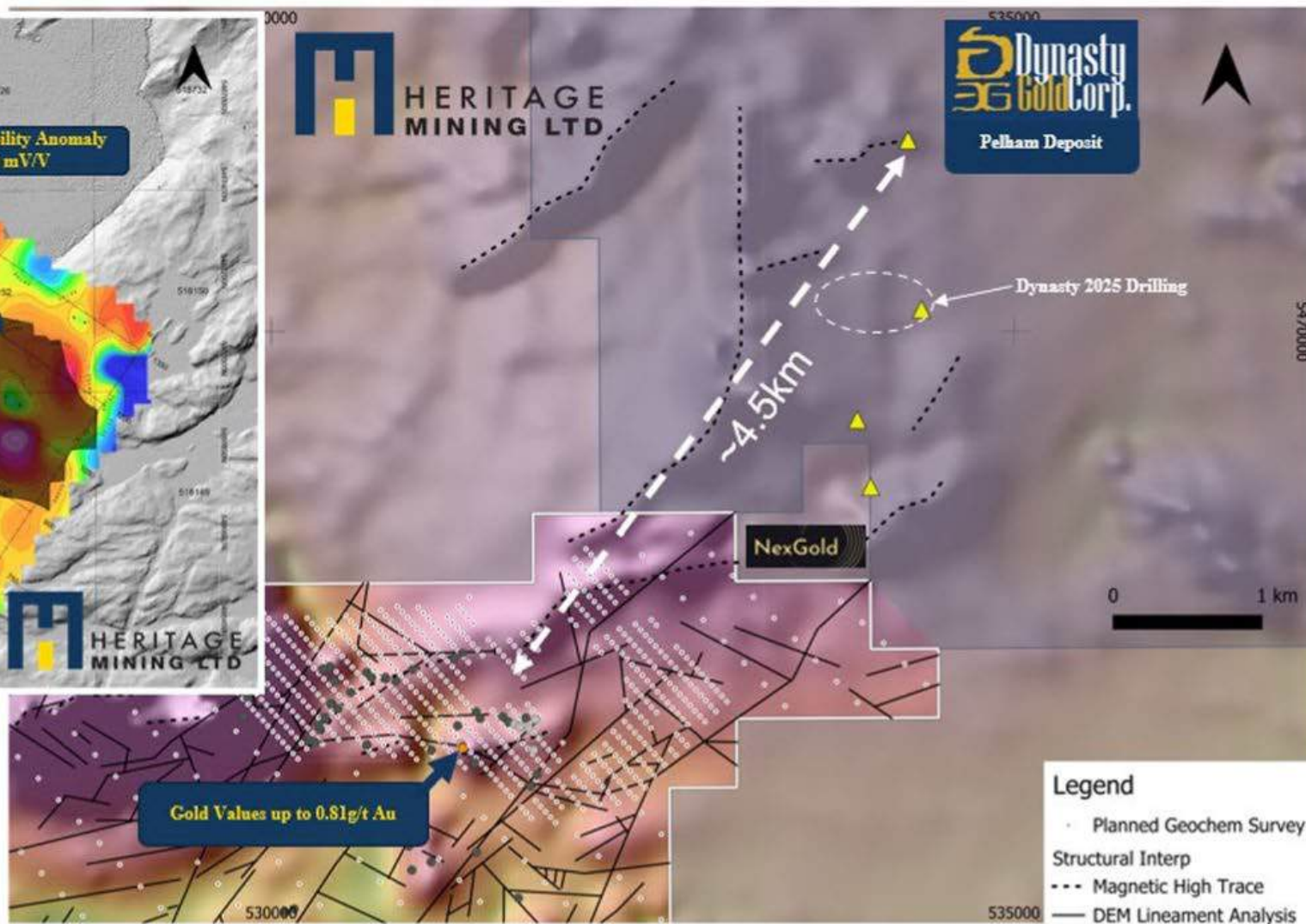
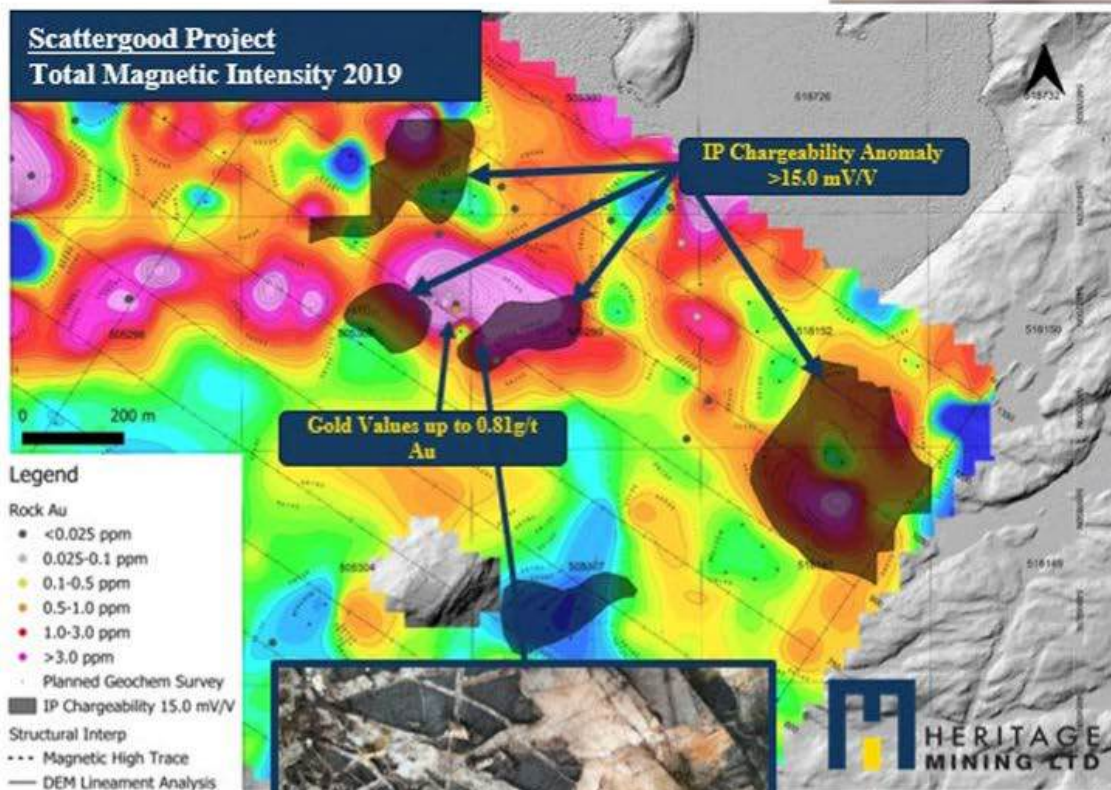




# Ontario Project Portfolio

## Scattergood Project

District Scale Discovery Potential  
in NW Ontario, Canada





# Ontario Project Portfolio

## Core Shack – Sioux Lookout

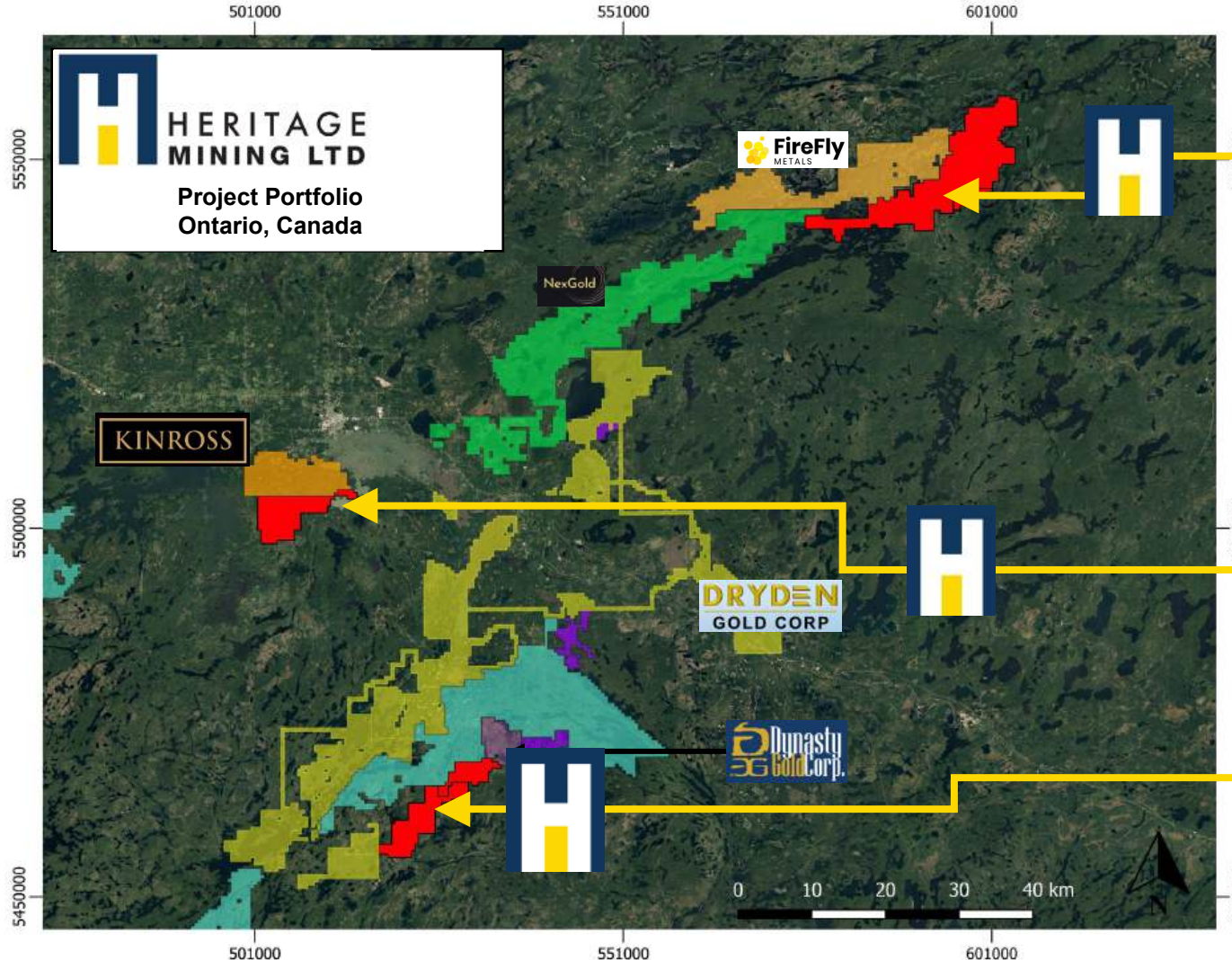




# Ontario Project Portfolio

District Scale Discovery Potential  
in NW Ontario, Canada

Heritage Mining Ltd. is a public junior exploration company focused on developing Tier-1 precious and base metal assets in mining-friendly regions.  
The Company is listed on the Canadian Securities Exchange (CSE: HML) and the Boerse Frankfurt Exchange (FRA: Y66)



## Drayton – Black Lake Project – Active Drilling

Active 2025 Diamond Drill Program Zone 3

### Extension Drill Highlights:

- Drilling discovered a broad zone of granite-hosted quartz vein mineralization
- Widest quartz vein ever intersected at the Project (46m from 209.40m to 255.55m)
- Locally visible sulphides include chalcopyrite, galena, pyrite and hematite staining
- ~1,300m program

## Contact Bay Project

Active 2025 Diamond Drill Program

- ~2,700m drilled at Rognon Mine Area, small scale past producing mine in early 1900's, Assays Pending

## Scattergood Project

Active 2025 Field Program

- Targeted prospecting program focusing on shear zones in the north east portion of the property

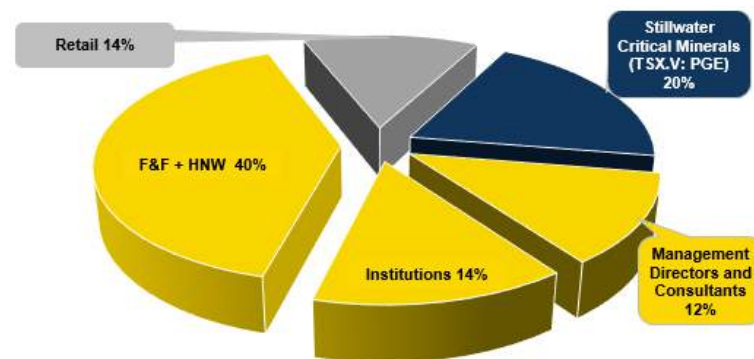




**Heritage Mining Inc.**

Peter Schloo, CPA, CA, CFA  
President, CEO & Director  
**[peter@heritagemining.ca](mailto:peter@heritagemining.ca)**  
905.505.0918

# Company Snapshot - Appendix



## Summary

Coverage	Couloir Capital (Buy: C\$0.40)
Current Share Price*	C\$0.03
Basic (Share o/s)	~162M
Market Capitalization*	~C\$5.00M
Ave. Volume (65 Days)	~700,000 Shares per Day

## Warrant Breakdown

Exercise price	Warrants O/S (000's)	Implied Financing (000's)
0.05	18,640	932
0.075	25,642	1,923
0.09	592	53
0.10	10,660	1,066
0.15	13,685	2,053
<b>Total</b>	<b>69,219</b>	<b>6,027</b>